

# Berenson

*Symphony of Designs*



# Berenson

Established 1957

## Timeless Designs in One Day's Time

### Sequential Orchestration

Forte: Purpose & Vision	.3
Finishes in Harmony	.4
Finishes Ensemble	.6
In Tempo: Parts Selection Guide	.7
Baroque*	.8
Vibrato*	.10
Adagio*	.12
Overture*	.14
Sonata*	.16
Rhapsody*	.18
Andante*	.20
Euro Rustica*	.22
Prelude*	.24
American Revival	.26
American Classics	.28
Provence	.30
Euroline	.32
Largo	.34
Stainless Steel	.37
Plymouth	.41
Euro Moderno	.44
Euro Traditions	.46
Euro Classica	.48
Euro Retro	.50
Atlantis	.52
Newport	.54
American Craftsman	.56
American Mission	.58
American Heritage	.60
Encore	.62
Valencia	.64
Europa	.66
Barcelona	.68
Cambridge	.70
Canterbury	.72
Manchester	.74
Cadence	.76
Allegro	.78
Reprise	.80
Venice	.82
Concord	.84
Salem	.86
Lexington	.88
Appalachia	.90
Bedford	.92
Zurich	.94
Rio	.96
Coverheads and Accessories	.98
Progression: Part Number Index	.99
Choral for Customer Support	.104
Repertoire of Website Search	.105
Medley of Advantages	.106
Coda: Industry Suite	.107

### Arrangement of Collections

Adagio*	.12
Allegro	.78
American Classics	.28
American Craftsman	.56
American Heritage	.60
American Mission	.58
American Revival	.26
Andante*	.20
Appalachia	.90
Atlantis	.52
Barcelona	.68
Baroque*	.8
Bedford	.92
Cadence	.76
Cambridge	.70
Canterbury	.72
Concord	.84
Encore	.62
Euroline	.32
Europa	.66
Euro Classica	.46
Euro Moderno	.50
Euro Traditions	.48
Euro Retro	.44
Euro Rustica*	.22
Largo	.34
Lexington	.88
Manchester	.74
Newport	.54
Overture*	.14
Plymouth	.41
Prelude*	.24
Provence	.30
Reprise	.80
Rhapsody*	.18
Rio	.96
Salem	.86
Sonata*	.16
Stainless Steel	.37
Valencia	.64
Venice	.82
Vibrato*	.10
Zurich	.94

# Purpose

To provide hassle-free service and unique solutions for your decorative hardware needs.



# Vision

People pulling together to make Berenson your first choice for visual hardware solutions.



Kitchen and bath photography courtesy of Dura Supreme.

\* New Berenson collection to this catalog. Various other collections have new items added.

# Finishes in Harmony

Berenson offers more than 70 attractive and distinctive finishes in a variety of materials. The sampling on these two pages presents several suites of our more popular selections. For the entire ensemble of Berenson finishes, see pages 6 and 7.

## Weathered



Weathered Copper



Weathered Nickel



Antique Latte Glaze



Weathered Iron



Bronze Rust Glaze

## Glazed

## Brushed



Brushed Antique Brass



Brushed Black Nickel



Brushed Nickel



Brushed Bronze



Brushed Tin

## Antique



Pewter French Iron



Dark Antique



Antique English



Dull Antique Brass



Antique Coppertone

## Colors



Almond Crackle



White



Satin Black



Black Nickel



Gold/White

## Bronzes



Rubbed Bronze



Oil Rubbed Bronze



Dull Bronze



Venetian Bronze



Bronze

## Rustic



Rustic Copper



Rustic Iron



Rustic Black Nickel



Rustic Pewter



Rustic Nickel

## Polished



Polished Copper



Polished Brass



Polished Antique Brass



Polished Gold



Polished Chrome

## Metals



Aluminum



Stainless Steel



Dull Rust



Tin



Matte Nickel

# Finishes Ensemble

	02 Antique Brass or English		88 Gold/White		DC Dark Copper
	03 Polished Brass		89 Gold/Black		FB Dark Antique
	06 Bronze		90 Gold/Pearl		FE Dull Rust
	07 Polished Gold		95 Black/White		LWI Weathered Iron
	10 Rubbed Bronze		98 Black Nickel		MN Matte Nickel
	15 Brushed Chrome or Satin Nickel		99 Antique Silver		ORB Oil Rubbed Bronze
	16 Satin Nickel/Brass or Gold		AB Antique Brass		RAB Rustic Brushed Brass
	17 Brushed Nickel/Brass		AEP Polished Antique Brass		RB Rustic Brass
	26 Polished Chrome		AG Antique Latte Glaze		RBG Bronze Rust Glaze
	27 Chrome/Black		AI Antique Iron		RBN Rustic Black Nickel
	30 Unlacquered Oak		ALU Aluminum		RC Rustic Copper
	34 Lacquered Oak		AP Antique Pewter		RI Rustic Iron
	37 Oatmeal Ceramic		BAB Brushed Antique Brass		RN Rustic Nickel
	38 Almond Ceramic		BAC Brushed Antique Copper		RP Rustic Pewter
	39 White Ceramic		BAP Brushed Antique Pewter		RU Rust
	47 Clear/Transparent		BBN Brushed Black Nickel		SB Satin Brass
	48 White		BBZ Brushed Bronze		SC Satin Chrome
	52 Almond		BD Bedford Brass		SCH Unlacquered Cherry
	54 Gray		BPN Brushed Nickel		SRO Unlacquered Red Oak
	55 Black		BT Brushed Tin		SS Stainless Steel
	56 Navy		CR Crackle		SWM Unlacquered White Maple
	57 Red		CT Antique Coppertone		SWP Unlacquered White Pine
	67 Chrome/White		CU Polished Copper		TN Tin
	86 Old Bronze/White		DAB Dull Antique Brass		VB Venetian Bronze
	87 Tin/White		DBZ Dull Bronze		WC Weathered Copper
					WN Weathered Nickel

# Parts Selection Guide

Parts are identified throughout this catalog as follows:

- Four-digit item code (followed by a dash)
- One-digit primary material code
- Two-digit code or a character code (two or three letters) to distinguish the finish (followed by a dash)
- One-letter packaging code

See the example at right.

Example:

**PART NUMBER**

1632 - 1 RBG - P

Item No.     |     |     Packaging

                  Material    Finish

**Description:** Zinc Diecast, Bronze Rust Glaze, Polybagged w/Mounting Hardware

## Key to Material Codes

- 1 Zinc Diecast (Zamac)
- 2 Steel
- 3 Brass
- 4 Aluminum
- 5 Ceramic/Porcelain
- 6 Wood
- 7 Plastic/Acrylic
- 9 Other (Stainless Steel or Crystal)

## Key to Packaging Codes

- B Item is supplied in bulk without mounting screws or escutcheon pins. (Mounting hardware ordered separately.)
- C Item is supplied in a carton with 8-32 x 1" or M4 x 45mm breakoff screws.
- P Item is individually polybagged with 8-32 x 1" screws or other mounting hardware.

## Key to Finish Codes

- 00 Miscellaneous
- 02 Antique Brass or Antique English
- 03 Polished Brass
- 06 Bronze
- 07 Polished Gold
- 10 Rubbed Bronze
- 15 Brushed Chrome or Satin Nickel
- 16 Satin Nickel/Brass or Gold
- 17 Brushed Nickel/Brass
- 26 Polished Chrome
- 27 Chrome/Black
- 30 Unlacquered Oak
- 34 Lacquered Oak
- 37 Oatmeal Ceramic
- 38 Almond Ceramic
- 39 White Ceramic
- 47 Clear/Transparent
- 48 White
- 52 Almond
- 54 Gray
- 55 Black
- 56 Navy
- 57 Red
- 67 Chrome/White
- 86 Old Bronze/White
- 87 Tin/White
- 88 Gold/White
- 89 Gold/Black
- 90 Gold/Pearl
- 95 Black/White
- 98 Black Nickel
- 99 Antique Silver
- AB Antique Brass
- AEP Polished Antique Brass
- AG Antique Latte Glaze
- AI Antique Iron
- ALU Aluminum
- AP Antique Pewter
- BAB Brushed Antique Brass
- BAC Brushed Antique Copper
- BAP Brushed Antique Pewter
- BBN Brushed Black Nickel
- BBZ Brushed Bronze
- BD Bedford Brass
- BPN Brushed Nickel
- BT Brushed Tin
- CR Crackle
- CT Antique Coppertone
- CU Polished Copper
- DAB Dull Antique Brass
- DBZ Dull Bronze
- DC Dark Copper
- FB Dark Antique
- FE Dull Rust
- LWI Weathered Iron
- MN Matte Nickel
- ORB Oil Rubbed Bronze
- RAB Rustic Brushed Brass
- RB Rustic Brass
- RBG Bronze Rust Glaze
- RBN Rustic Black Nickel
- RC Rustic Copper
- RI Rustic Iron
- RN Rustic Nickel
- RP Rustic Pewter
- RU Rust
- SB Satin Brass
- SC Satin Chrome
- SCH Unlacquered Cherry
- SRO Unlacquered Red Oak
- SS Stainless Steel
- SWM Unlacquered White Maple
- SWP Unlacquered White Pine
- TN Tin
- VB Venetian Bronze
- WC Weathered Copper
- WN Weathered Nickel

NOTE: All dimensions shown in this catalog are in inches unless specified otherwise.



## Baroque

	PART NO.	TYPE	FINISH	LENGTH	WIDTH	HEIGHT	DIAMETER	BASE	CC	TAP
	1	1610-1RBG-B	Pull	Bronze Rust Glaze	6-1/16	11/16	1	7/8	5	8-32
	2	1614-1RBG-B	Knob	Bronze Rust Glaze			1-1/8	1-1/4	5/8	8-32
	3	1621-1AG-B	Pull	Antique Latte Glaze	6-1/16	11/16	1	7/8	5	8-32
	4	1625-1AG-B	Knob	Antique Latte Glaze			1-1/8	1-1/4	5/8	8-32
	5	1630-1AP-P	Pull	Antique Pewter	6-1/16	11/16	1	7/8	5	8-32
	6	1631-1VB-P	Pull	Venetian Bronze	6-1/16	11/16	1	7/8	5	8-32
	7	1632-1RBG-P	Knob	Bronze Rust Glaze			15/16	1-1/4	5/8	8-32
	8	1633-1AG-P	Knob	Antique Latte Glaze			15/16	1-1/4	5/8	8-32
	9	1634-1AP-P	Knob	Antique Pewter			15/16	1-1/4	5/8	8-32
	10	1635-1VB-P	Knob	Venetian Bronze			15/16	1-1/4	5/8	8-32
	11	1636-1RBG-P	Pull	Bronze Rust Glaze	4-1/2	9/16	1-3/16	11/16	3	8-32
	12	1637-1AG-P	Pull	Antique Latte Glaze	4-1/2	9/16	1-3/16	11/16	3	8-32
	13	1638-1AP-P	Pull	Antique Pewter	4-1/2	9/16	1-3/16	11/16	3	8-32
	14	1639-1VB-P	Pull	Venetian Bronze	4-1/2	9/16	1-3/16	11/16	3	8-32
	15	1640-1RBG-P	Cup Pull	Bronze Rust Glaze	5-1/16	1-13/16	7/8		3 & 96mm	8-32
	16	1641-1AG-P	Cup Pull	Antique Latte Glaze	5-1/16	1-13/16	7/8		3 & 96mm	8-32
	17	1642-1AP-P	Cup Pull	Antique Pewter	5-1/16	1-13/16	7/8		3 & 96mm	8-32
	18	1643-1AP-P	Knob	Antique Pewter			1-1/8	1-1/4	5/8	8-32
	19	1644-1VB-P	Knob	Venetian Bronze			1-1/8	1-1/4	5/8	8-32



Baroque



Designers' Group 7



## Vibrato

	PART NO.	TYPE	FINISH	LENGTH	WIDTH	HEIGHT	DIAMETER	BASE	CC	TAP
	1	Cup Pull	Venetian Bronze	4-5/8	1-3/8	1			3	8-32
	2	Knob	Venetian Bronze	1-5/16	7/8	1-1/4		5/8		8-32
	3	Pull	Venetian Bronze	5-11/16	5/8	1-1/4		5/8	128mm	8-32
	4	Cup Pull	Venetian Bronze	4-1/16	1-1/4	1			64mm	8-32
	5	Pull	Venetian Bronze	4-15/16	11/16	1-1/8		15/16	96mm	8-32
	6	Knob	Venetian Bronze			1	1-3/16	1		8-32
	7	Knob	Venetian Bronze	1-7/16	11/16	1		7/16		8-32
	8	Pull	Venetian Bronze	4-5/8	7/16	13/16		1/2	3	8-32
	9	Knob	Venetian Bronze			1-1/8	1-1/4	3/4		8-32
	10	Pull	Venetian Bronze	4-11/16	3/8	1-3/16		3/4	3	8-32
	11	Pull	Venetian Bronze	3-3/8	3/8	1-1/4		3/8	3	8-32
	12	Pull	Venetian Bronze	6-7/16	5/16	1-5/8		1/2	128mm	8-32
	13	Pull	Venetian Bronze	5-3/16	5/16	1-5/16		1/2	96mm	8-32
	14	Knob	Venetian Bronze	1-11/16	1/2	1-3/16		1/2		8-32
	15	Hook	Venetian Bronze	4	3/8	3-1/16		1-1/16		



Vibrato  
Berenson



## Adagio

	PART NO.	TYPE	FINISH	LENGTH	WIDTH	HEIGHT	DIAMETER	BASE	CC	TAP
	1	Bail Pull	Oil Rubbed Bronze	5-13/16	15/16	1-1/16		9/16	128mm	8-32
	2	Knob	Oil Rubbed Bronze	2-7/16	7/8	1-7/16		1/2		8-32
	3	Pull	Oil Rubbed Bronze	4-5/16	3/4	1-7/8		5/16	4	8-32
	4	Knob	Oil Rubbed Bronze			1-7/16	1-1/2	1/2		8-32
	5	Pull	Oil Rubbed Bronze	3-5/8	3/8	1-1/4		5/8	3	8-32
	6	Cup Pull	Oil Rubbed Bronze	4-5/8	1-3/8	1			3	8-32
	7	Knob	Oil Rubbed Bronze	1-5/16	7/8	1-1/4		5/8		8-32
	8	Knob	Oil Rubbed Bronze			1	1-3/16	5/8		8-32
	9	Pull	Oil Rubbed Bronze	5-1/8	7/16	7/8		1/2	3	8-32
	10	Knob	Oil Rubbed Bronze			1	1-3/16	1		8-32
	11	Pull	Oil Rubbed Bronze	4-5/8	1/2	1		7/8	3	8-32
	12	Knob	Oil Rubbed Bronze			1-1/16	1-1/4	5/8		8-32
	13	Knob	Oil Rubbed Bronze			1-1/16	1-3/16	3/4		8-32
	14	Pull	Oil Rubbed Bronze	4-5/16	9/16	1-1/16		9/16	96mm	8-32
	15	Hook	Oil Rubbed Bronze	4	3/8	3-1/16		1-1/16		



Adagio

Berenson



## Overture

	PART NO.	TYPE	FINISH	LENGTH	WIDTH	HEIGHT	DIAMETER	BASE	CC	TAP
1	7104-1BPN-C	Pull	Brushed Nickel	7	7/8	1-3/16		1-3/16	128mm	M4
2	7105-1RN-C	Pull	Rustic Nickel	7	7/8	1-3/16		1-3/16	128mm	M4
3	7106-1RI-C	Pull	Rustic Iron	7	7/8	1-3/16		1-3/16	128mm	M4
4	7107-1RC-C	Pull	Rustic Copper	7	7/8	1-3/16		1-3/16	128mm	M4
5	7108-1RBN-C	Pull	Rustic Black Nickel	7	7/8	1-3/16		1-3/16	128mm	M4
6	7109-1BPN-C	Pull	Brushed Nickel	5-3/8	3/4	1-1/16	1		96mm	M4
7	7110-1RN-C	Pull	Rustic Nickel	5-3/8	3/4	1-1/16	1		96mm	M4
8	7111-1RI-C	Pull	Rustic Iron	5-3/8	3/4	1-1/16	1		96mm	M4
9	7112-1RC-C	Pull	Rustic Copper	5-3/8	3/4	1-1/16	1		96mm	M4
10	7113-1RBN-C	Pull	Rustic Black Nickel	5-3/8	3/4	1-1/16	1		96mm	M4
11	7114-1BPN-C	Knob	Brushed Nickel			1	1-5/16	1/2		M4
12	7115-1RN-C	Knob	Rustic Nickel			1	1-5/16	1/2		M4
13	7116-1RI-C	Knob	Rustic Iron			1	1-5/16	1/2		M4
14	7117-1RC-C	Knob	Rustic Copper			1	1-5/16	1/2		M4
15	7118-1RBN-C	Knob	Rustic Black Nickel			1	1-5/16	1/2		M4



Designers' Group 6



## Sonata

	PART NO.	TYPE	FINISH	LENGTH	WIDTH	HEIGHT	DIAMETER	BASE	CC	TAP
1	7119-1BPN-C	Pull	Brushed Nickel	4-11/16	1	1		3/8	96mm	M4
2	7120-1RAB-C	Pull	Rustic Brushed Brass	4-11/16	1	1		3/8	96mm	M4
3	7121-1RN-C	Pull	Rustic Nickel	4-11/16	1	1		3/8	96mm	M4
4	7122-1RI-C	Pull	Rustic Iron	4-11/16	1	1		3/8	96mm	M4
5	7123-1RC-C	Pull	Rustic Copper	4-11/16	1	1		3/8	96mm	M4
6	7124-1RBN-C	Pull	Rustic Black Nickel	4-11/16	1	1		3/8	96mm	M4
7	7125-1BPN-C	Knob	Brushed Nickel			1	1-3/16	7/16		M4
8	7126-1RAB-C	Knob	Rustic Brushed Brass			1	1-3/16	7/16		M4
9	7127-1RN-C	Knob	Rustic Nickel			1	1-3/16	7/16		M4
10	7128-1RI-C	Knob	Rustic Iron			1	1-3/16	7/16		M4
11	7129-1RC-C	Knob	Rustic Copper			1	1-3/16	7/16		M4
12	7130-1RBN-C	Knob	Rustic Black Nickel			1	1-3/16	7/16		M4



Designers' Group 6



## Rhapsody

	PART NO.	TYPE	FINISH	LENGTH	WIDTH	HEIGHT	DIAMETER	BASE	CC	TAP
	1	3040-155-P	Pull	Satin Black	5-7/16	3/8	1-1/4	3/8	128mm	8-32
	2	3041-1LWI-P	Pull	Weathered Iron	5-7/16	3/8	1-1/4	3/8	128mm	8-32
	3	3042-1WN-P	Pull	Weathered Nickel	5-7/16	3/8	1-1/4	3/8	128mm	8-32
	4	3043-155-P	Pull	Satin Black	4-3/16	3/8	1-1/4	3/8	96mm	8-32
	5	3044-1LWI-P	Pull	Weathered Iron	4-3/16	3/8	1-1/4	3/8	96mm	8-32
	6	3045-1WN-P	Pull	Weathered Nickel	4-3/16	3/8	1-1/4	3/8	96mm	8-32
	7	3046-155-P	Knob	Satin Black	2-1/2	1/2	1-1/8	3/8		8-32
	8	3047-1LWI-P	Knob	Weathered Iron	2-1/2	1/2	1-1/8	3/8		8-32
	9	3048-1WN-P	Knob	Weathered Nickel	2-1/2	1/2	1-1/8	3/8		8-32
	10	3049-155-P	Knob	Satin Black	1-3/16	1-3/16	1-1/4	3/8		8-32
	11	3050-1LWI-P	Knob	Weathered Iron	1-3/16	1-3/16	1-1/4	3/8		8-32
	12	3051-1WN-P	Knob	Weathered Nickel	1-3/16	1-3/16	1-1/4	3/8		8-32
	13	3052-155-P	Knob	Satin Black			1	1-5/16	3/8	8-32
	14	3053-1LWI-P	Knob	Weathered Iron			1	1-5/16	3/8	8-32
	15	3054-1WN-P	Knob	Weathered Nickel			1	1-5/16	3/8	8-32
	16	3055-155-P	Knob	Satin Black			15/16	1-1/4	9/16	8-32
	17	3056-1LWI-P	Knob	Weathered Iron			15/16	1-1/4	9/16	8-32
	18	3057-1WN-P	Knob	Weathered Nickel			15/16	1-1/4	9/16	8-32



Rhapsody



Designers' Group 8



## Andante

	PART NO.	TYPE	FINISH	LENGTH	WIDTH	HEIGHT	DIAMETER	BASE	CC	TAP
	1	3008-1DBZ-P	Pull	Dull Bronze	5-11/16	5/8	1-1/4	5/8	128mm	8-32
	2	3009-1DBZ-P	Cup Pull	Dull Bronze	4-1/16	1-1/4	1		64mm	8-32
	3	3011-1AP-P	Pull	Antique Pewter	5-11/16	5/8	1-1/4	5/8	128mm	8-32
	4	3012-1AP-P	Cup Pull	Antique Pewter	4-1/16	1-1/4	1		64mm	8-32
	5	3014-1BPN-P	Pull	Brushed Nickel	4-15/16	11/16	1-1/8	15/16	96mm	8-32
	6	7881-1BPN-P	Pull	Brushed Nickel	5-11/16	5/8	1-1/4	5/8	128mm	8-32
	7	7882-1AEP-P	Pull	Polished Antique Brass	5-11/16	5/8	1-1/4	5/8	128mm	8-32
	8	7884-1BPN-P	Cup Pull	Brushed Nickel	4-1/16	1-1/4	1		64mm	8-32
	9	7885-1AEP-P	Cup Pull	Polished Antique Brass	4-1/16	1-1/4	1		64mm	8-32
	10	7887-1AEP-P	Pull	Polished Antique Brass	4-15/16	11/16	1-1/8	15/16	96mm	8-32
	11	7888-1AP-P	Pull	Antique Pewter	4-15/16	11/16	1-1/8	15/16	96mm	8-32
	12	7889-1DBZ-P	Pull	Dull Bronze	4-15/16	11/16	1-1/8	15/16	96mm	8-32
	13	7891-1BPN-P	Knob	Brushed Nickel			1	1-3/16	1	8-32
	14	7892-1AEP-P	Knob	Polished Antique Brass			1	1-3/16	1	8-32
	15	7893-1AP-P	Knob	Antique Pewter			1	1-3/16	1	8-32
	16	7894-1DBZ-P	Knob	Dull Bronze			1	1-3/16	1	8-32

Andante

Designers' Group 8



## Euro Rustica

PART NO.	TYPE	FINISH	LENGTH	WIDTH	HEIGHT	DIAMETER	BASE	CC	TAP
1	Cup Pull	Rustic Nickel	5-1/8	1-3/8	1			64mm	M4
2	Cup Pull	Rustic Copper	5-1/8	1-3/8	1			64mm	M4
3	Cup Pull	Rustic Iron	5-1/8	1-3/8	1			64mm	M4
4	Knob	Rustic Nickel			1-1/8	1-3/8	1-1/16		M4
5	Knob	Rustic Copper			1-1/8	1-3/8	1-1/16		M4
6	Knob	Rustic Iron			1-1/8	1-3/8	1-1/16		M4
7	Pull	Rustic Nickel	4-15/16	13/16	1		11/16	96mm	M4
8	Pull	Rustic Copper	4-15/16	13/16	1		11/16	96mm	M4
9	Pull	Rustic Iron	4-15/16	13/16	1		11/16	96mm	M4
10	Knob	Rustic Nickel			1-1/16	1-3/16	15/16		M4
11	Knob	Rustic Copper			1-1/16	1-3/16	15/16		M4
12	Knob	Rustic Iron			1-1/16	1-3/16	15/16		M4
13	Pull	Rustic Nickel	4-3/8	1/2	1-3/16		9/16	96mm	M4
14	Pull	Rustic Copper	4-3/8	1/2	1-3/16		9/16	96mm	M4
15	Pull	Rustic Iron	4-3/8	1/2	1-3/16		9/16	96mm	M4
16	Knob	Rustic Nickel			1	1-3/16	7/16		M4
17	Knob	Rustic Copper			1	1-3/16	7/16		M4
18	Knob	Rustic Iron			1	1-3/16	7/16		M4



Euro Rustica  
Barenson



## Prelude

	PART NO.	TYPE	FINISH	LENGTH	WIDTH	HEIGHT	DIAMETER	BASE	CC	TAP
1	8010-03-P	Hook	Polished Brass	4	3/8	3-1/16		1-1/16		
2	8011-26-P	Hook	Polished Chrome	4	3/8	3-1/16		1-1/16		
3	8012-BPN-P	Hook	Brushed Nickel	4	3/8	3-1/16		1-1/16		
4	8013-WN-P	Hook	Weathered Nickel	4	3/8	3-1/16		1-1/16		
5	8014-55-P	Hook	Satin Black	4	3/8	3-1/16		1-1/16		
6	8015-ORB-P	Hook	Oil Rubbed Bronze	4	3/8	3-1/16		1-1/16		
7	8016-VB-P	Hook	Venetian Bronze	4	3/8	3-1/16		1-1/16		
8	8017-LWI-P	Hook	Weathered Iron	4	3/8	3-1/16		1-1/16		



## American Revival

PART NO.	TYPE	FINISH	LENGTH	WIDTH	HEIGHT	DIAMETER	BASE	CC	TAP
1	Pull	Bronze Rust Glaze	6-1/16	2	1		7/8	5	8-32
2	Cup Pull	Bronze Rust Glaze	4	1-3/4	1-1/8			2	8-32
3	Cup Pull	Bronze Rust Glaze	4	1-3/4	1-1/8			2-3/4	8-32
4	Pull	Bronze Rust Glaze	4	13/16	3/4		13/16	3-5/16	8-32
5	Knob	Bronze Rust Glaze			1-1/8	1-1/4	5/8		8-32
6	Knob	Bronze Rust Glaze	1-1/4	1-1/4	1		5/8		8-32
7	Knob	Bronze Rust Glaze			1-1/32	1-3/16	5/8		8-32
8	Knob	Bronze Rust Glaze			1-3/16	1-1/4	5/16		8-32
9	Knob	Bronze Rust Glaze			7/8	1-5/16	5/8		8-32
10	Cup Pull	Bronze Rust Glaze	3	1-1/4	7/8			1-1/4	8-32
11	Knob	Bronze Rust Glaze			1-1/8	1-1/4	5/8		8-32
12	Pull	Antique Latte Glaze	6-1/16	2	1		7/8	5	8-32
13	Cup Pull	Antique Latte Glaze	4	1-3/4	1-1/8			2	8-32
14	Cup Pull	Antique Latte Glaze	4	1-3/4	1-1/8			2-3/4	8-32
15	Pull	Antique Latte Glaze	4	13/16	3/4		13/16	3-5/16	8-32
16	Knob	Antique Latte Glaze			1-1/8	1-1/4	5/8		8-32
17	Knob	Antique Latte Glaze	1-1/4	1-1/4	1		5/8		8-32
18	Knob	Antique Latte Glaze			1-1/32	1-3/16	5/8		8-32
19	Knob	Antique Latte Glaze			1-3/16	1-1/4	5/16		8-32
20	Knob	Antique Latte Glaze			7/8	1-5/16	5/8		8-32



American Revival



Designers' Group 3



Designers' Group 7

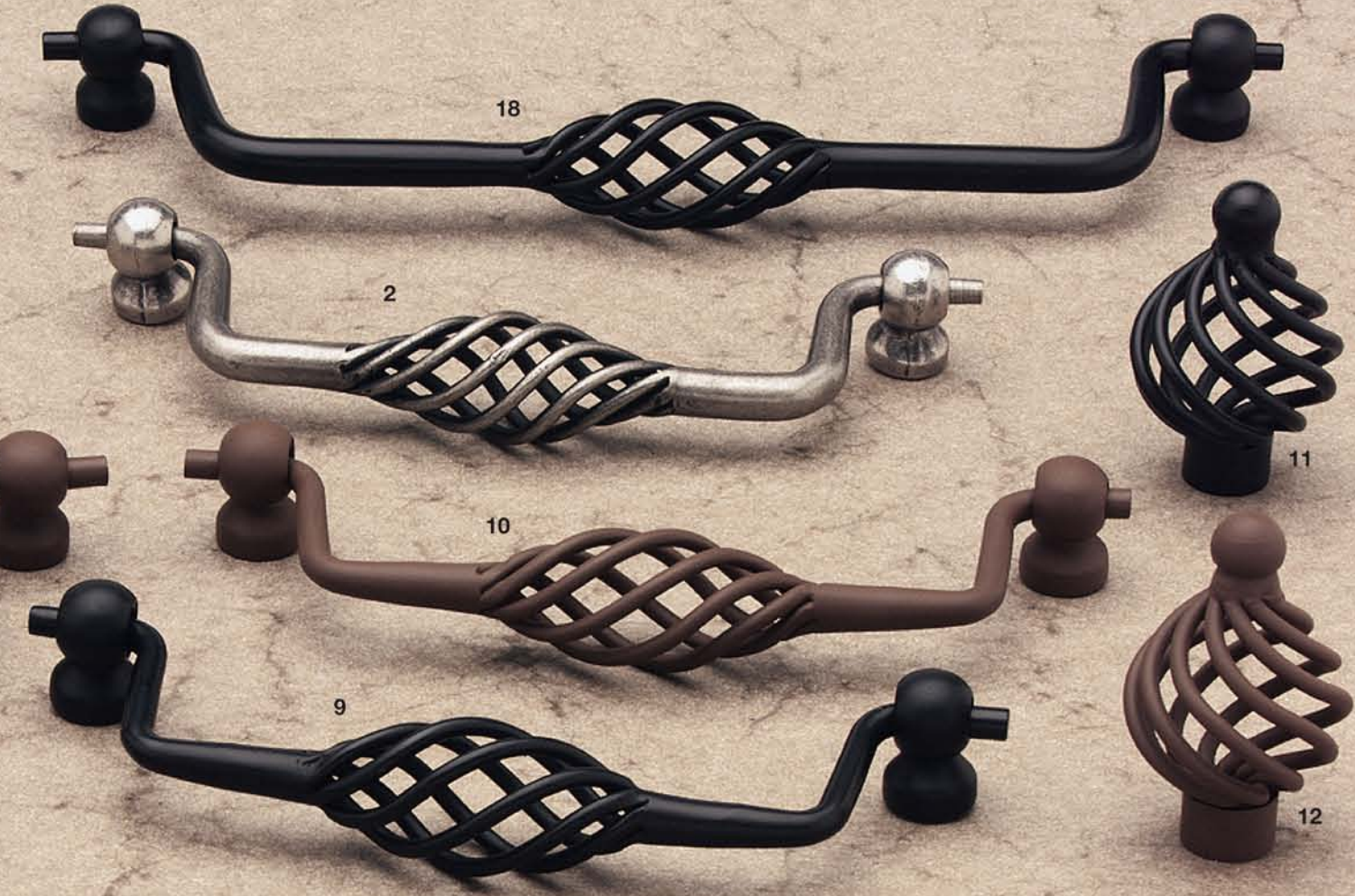


## American Classics

	PART NO.	TYPE	FINISH	LENGTH	WIDTH	HEIGHT	DIAMETER	BASE	CC	TAP
	1	Knob	Dull Rust			1-1/8	1-1/4	9/16		8-32
	2	Knob	Brushed Nickel			1-1/16	1-1/4	5/8		8-32
	3	Pull	Rubbed Bronze	3-11/16	3/8	1-1/4		5/8	3	8-32
	4	Pull	Brushed Nickel	3-11/16	3/8	1-1/4		5/8	3	8-32
	5	Pull	Dull Rust	3-11/16	3/8	1-1/4		5/8	3	8-32
	6	Pull	Weathered Nickel	3-11/16	3/8	1-1/4		5/8	3	8-32
	7	Pull	Weathered Copper	3-11/16	3/8	1-1/4		5/8	3	8-32
	8	Cup Pull	Rubbed Bronze	4-11/16	1-7/16	15/16			3	8-32
	9	Cup Pull	Dull Rust	4-11/16	1-7/16	15/16			3	8-32
	10	Cup Pull	Weathered Copper	4-11/16	1-7/16	15/16			3	8-32
	11	Cup Pull	Weathered Nickel	4-11/16	1-7/16	15/16			3	8-32
	12	Cup Pull	Brushed Nickel	4-11/16	1-7/16	15/16			3	8-32
	13	Knob	Rubbed Bronze			1	1-1/8	5/8		8-32
	14	Knob	Brushed Nickel			1	1-1/8	5/8		8-32
	15	Knob	Weathered Copper			1	1-1/8	5/8		8-32
	16	Knob	Weathered Nickel			1	1-1/8	5/8		8-32
	17	Knob	Rubbed Bronze	1-5/16	7/8	1-1/4		5/8		8-32
	18	Knob	Dull Rust	1-5/16	7/8	1-1/4		5/8		8-32
	19	Knob	Weathered Copper	1-5/16	7/8	1-1/4		5/8		8-32
	20	Knob	Weathered Nickel	1-5/16	7/8	1-1/4		5/8		8-32
	21	Knob	Brushed Nickel	1-5/16	7/8	1-1/4		5/8		8-32
	22	Knob	Rubbed Bronze			1-1/16	1-3/16	5/8		8-32
	23	Knob	Weathered Copper			1-1/16	1-3/16	5/8		8-32
	24	Knob	Weathered Nickel			1-1/16	1-3/16	5/8		8-32



American Classics  
Berenson



## Provence

	PART NO.	TYPE	FINISH	LENGTH	WIDTH	HEIGHT	DIAMETER	BASE	CC	TAP
	1	9960-2AP-P	Fixed Pull	Pewter French Iron	4-5/16	3/4	1-9/16	5/16	4	8-32
	2	9961-2AP-P	Bail Pull	Pewter French Iron	5-7/8	1-7/8	1	9/16	128mm	8-32
	3	9962-2AP-P	Bail Pull	Pewter French Iron	8-1/2	2-1/8	1-1/4	9/16	192mm	8-32
	4	9964-2AP-P	Knob Round	Pewter French Iron			2-1/8	1-3/8	9/16	8-32
	5	9966-2AP-P	Knob Small Oval	Pewter French Iron	2-7/16	7/8	1-3/8	15/32		8-32
	6	9967-2AP-P	Knob Large Oval	Pewter French Iron	2-15/16	1-1/16	2-9/16	15/32		8-32
	7	9980-255-P	Fixed Pull	Black	4-5/16	3/4	1-9/16	5/16	4	8-32
	8	9981-2RU-P	Fixed Pull	Rust	4-5/16	3/4	1-9/16	5/16	4	8-32
	9	9982-255-P	Bail Pull	Black	5-7/8	1-7/8	1	9/16	128mm	8-32
	10	9983-2RU-P	Bail Pull	Rust	5-7/8	1-7/8	1	9/16	128mm	8-32
	11	9984-255-P	Knob Round	Black			2-1/8	1-3/8	9/16	8-32
	12	9985-2RU-P	Knob Round	Rust			2-1/8	1-3/8	9/16	8-32
	13	9986-255-P	Knob Small Oval	Black	2-7/16	7/8	1-3/8	15/32		8-32
	14	9987-2RU-P	Knob Small Oval	Rust	2-7/16	7/8	1-3/8	15/32		8-32
	15	9988-2AP-P	Bail Pull	Pewter French Iron	4-5/8	1-3/4	1-1/4	9/16	96mm	8-32
	16	9989-255-P	Bail Pull	Black	4-5/8	1-3/4	1-1/4	9/16	96mm	8-32
	17	9990-2RU-P	Bail Pull	Rust	4-5/8	1-3/4	1-1/4	9/16	96mm	8-32
	18	9991-255-P	Bail Pull	Black	8-1/2	2-1/8	1-1/4	9/16	192mm	8-32
	19	9992-2RU-P	Bail Pull	Rust	8-1/2	2-1/8	1-1/4	9/16	192mm	8-32



Designers' Group 2



## Euroline

	PART NO.	TYPE	FINISH	LENGTH	WIDTH	HEIGHT	DIAMETER	BASE	CC	TAP
1	2959-1ALU-C	Pull	Aluminum	7	1/2	1-3/8		5/16	128mm	M4
2	2960-1BPN-C	Pull	Brushed Nickel	7	1/2	1-3/8		5/16	128mm	M4
3	2961-126-C	Pull	Polished Chrome	9-1/2	1/2	1-3/8		5/16	192mm	M4
4	2962-1BPN-C	Pull	Brushed Nickel	9-1/2	1/2	1-3/8		5/16	192mm	M4
5	2963-1ALU-C	Pull	Aluminum	6-11/16	13/16	1		13/16	160mm	M4
6	2964-1BPN-C	Pull	Brushed Nickel	6-11/16	13/16	1		13/16	160mm	M4
7	2965-126-C	Pull	Polished Chrome	6-11/16	13/16	1		13/16	160mm	M4
8	2966-1ALU-C	Pull	Aluminum	7-15/16	13/16	1		13/16	192mm	M4
9	2967-1BPN-C	Pull	Brushed Nickel	7-15/16	13/16	1		13/16	192mm	M4
10	2968-1ALU-C	Pull	Aluminum	6	13/16	1		7/16	128mm	M4
11	2969-1ALU-C	Pull	Aluminum	7-1/4	13/16	1		7/16	160mm	M4
12	2970-126-C	Pull	Polished Chrome	7	1/2	1-3/8		5/16	128mm	M4
13	2971-1ALU-C	Pull	Aluminum	9-1/2	1/2	1-3/8		5/16	192mm	M4
14	2972-126-C	Pull	Polished Chrome	7-15/16	13/16	1		13/16	192mm	M4



Designers' Group 4

## Largo

PART NO.	TYPE	FINISH	LENGTH	WIDTH	HEIGHT	DIAMETER	BASE	CC	TAP
1	1010-9SS-C	Pull	Stainless Steel	7-1/8	7/8	1-11/16	7/8	160mm	M4
2	1011-9SS-C	Pull	Stainless Steel	8-7/16	7/8	1-11/16	7/8	192mm	M4
3	1012-9SS-C	Pull	Stainless Steel	9-3/4	7/8	1-11/16	7/8	224mm	M4
4	1014-9SS-C	Pull	Stainless Steel	13-1/2	7/8	1-11/16	7/8	320mm	M4
5	1015-9SS-C	Pull	Stainless Steel	5-9/16	7/8	1-5/16	1-3/16	128mm	M4
6	1016-9SS-C	Pull	Stainless Steel	6-7/8	7/8	1-5/16	1-3/16	160mm	M4
7	1017-9SS-C	Pull	Stainless Steel	8	7/8	1-5/16	1-3/16	192mm	M4
8	1018-9SS-C	Pull	Stainless Steel	12	7/8	1-5/16	1-3/16	292mm	M4
9	1019-9SS-C	Pull	Stainless Steel	13-1/8	7/8	1-5/16	1-3/16	320mm	M4
10	1020-9SS-C	Pull	Stainless Steel	15-15/16	7/8	1-5/16	1-3/16	392mm	M4
11	1021-9SS-C	Pull	Stainless Steel	19-7/8	7/8	1-5/16	1-3/16	492mm	M4



Designers' Group 4



### Stainless Steel

PART NO.	TYPE	FINISH	LENGTH	WIDTH	HEIGHT	DIAMETER	BASE	CC	TAP
1	7067-9SS-C	Pull	Stainless Steel	28-3/8	1/2	1-1/4	1/2	672mm	M4
2	7068-9SS-C	Pull	Stainless Steel	7	1/2	1-1/4	1/2	128mm	M4
3	7069-9SS-C	Pull	Stainless Steel	8-1/4	1/2	1-1/4	1/2	160mm	M4
4	7070-9SS-C	Pull	Stainless Steel	10-13/16	1/2	1-1/4	1/2	224mm	M4
5	7071-9SS-C	Pull	Stainless Steel	13-5/16	1/2	1-1/4	1/2	288mm	M4
6	7072-9SS-C	Pull	Stainless Steel	17-1/16	1/2	1-1/4	1/2	384mm	M4
7	7073-9SS-C	Pull	Stainless Steel	19-9/16	1/2	1-1/4	1/2	448mm	M4
8	7074-9SS-C	Pull	Stainless Steel	4-1/8	5/16	1-1/8	8mm	5/16	96mm M4
9	7075-9SS-C	Pull	Stainless Steel	4-3/16	3/8	1-3/8	10mm	3/8	96mm M4
10	7076-9SS-C	Pull	Stainless Steel	5-7/16	3/8	1-3/8	10mm	3/8	128mm M4
11	7077-9SS-C	Pull	Stainless Steel	11-3/4	3/8	1-3/8	10mm	3/8	288mm M4
12	7078-9SS-C	Knob	Stainless Steel			1-1/4	30mm	9/16	M4
13	7079-9SS-C	Knob	Stainless Steel			1-1/16	25mm	7/16	M4



Stainless Steel



# Plymouth

	PART NO.	TYPE	FINISH	LENGTH	WIDTH	HEIGHT	DIAMETER	BASE	CC	TAP
	1	2301-303-P	B/P Polished Brass			1/32	1-1/4	1-1/4		
	2	2618-303-P	Knob Polished Brass	1-3/8	13/16	1-1/4	1-3/8	5/8		8-32
	3	2790-303-B	B/P Polished Brass			3/32	5/8	5/8		
	4	2791-326-B	B/P Polished Chrome			3/32	5/8	5/8		
	5	2792-398-B	B/P Black Nickel			3/32	5/8	5/8		
	6	2794-326-P	Pull Polished Chrome	4-1/8	3/8	1-3/16		3/8	96mm	8-32
	7	2795-3BPN-P	Pull Brushed Nickel	4-1/8	3/8	1-3/16		3/8	96mm	8-32
	8	2796-398-P	Pull Black Nickel	4-1/8	3/8	1-3/16		3/8	96mm	8-32
	9	2797-326-P	Pull Polished Chrome	3-3/8	3/8	1-3/16		3/8	3	8-32
	10	2797-398-P	Pull Black Nickel	3-3/8	3/8	1-3/16		3/8	3	8-32
	11	2797-3BPN-P	Pull Brushed Nickel	3-3/8	3/8	1-3/16		3/8	3	8-32
	12	5284-303-P	Knob Polished Brass			1-5/16	1-1/4	1		8-32
	13	7300-303-P	Knob Polished Brass	1-3/16	13/16	1-1/4	1-3/16	9/16		8-32
	14	7315-303-P	Knob Polished Brass			1-3/32	1-1/4	3/4		8-32
	15	7316-303-P	Knob Polished Brass			7/8	1	9/16		8-32
	16	7317-303-B	Knob Polished Brass			3/4	3/4	1/2		8-32
	17	9312-303-P	Knob Polished Brass			15/16	1-1/4	3/4		8-32
	18	9528-399-P	Knob Antique Silver			1-3/32	1-1/4	11/16		8-32
	19	9530-398-P	Knob Black Nickel			1-3/32	1-1/4	11/16		8-32
	20	9532-326-P	Knob Polished Chrome			1	1-1/4	11/16		8-32
	21	9532-398-P	Knob Black Nickel			1	1-1/4	11/16		8-32
	22	9542-326-P	Knob Polished Chrome			1-3/32	1-1/4	11/16		8-32
	23	9932-303-P	Knob Polished Brass			1	1-1/4	5/8		8-32
	24	9950-303-P	Knob Polished Brass			1-1/8	1-1/4	3/4		8-32
	25	9951-326-P	Knob Polished Chrome			1-1/8	1-1/4	3/4		8-32
	26	9952-398-P	Knob Black Nickel			1-1/8	1-1/4	3/4		8-32
	27	9955-3SB-P	Knob Satin Brass			1-1/8	1-1/4	3/4		8-32
	28	9956-3BPN-P	Knob Brushed Nickel			1-1/8	1-1/4	3/4		8-32
	29	9956-302-P	Knob Antique English			1-1/8	1-1/4	3/4		8-32
	30	9958-3SC-P	Knob Satin Chrome			1-1/8	1-1/4	3/4		8-32
	31	9994-303-P	Pull Polished Brass	4-3/8	3/8	1-3/16		3/8	4	8-32
	32	9996-303-P	Pull Polished Brass	4-1/8	3/8	1-3/16		3/8	96mm	8-32
	33	9997-303-P	Pull Polished Brass	3-3/8	3/8	1-3/16		3/8	3	8-32
	34	9998-303-P	Pull Polished Brass	3-7/8	3/8	1-3/16		3/8	3-1/2	8-32



Plymouth



## Euro Moderno

PART NO.	TYPE	FINISH	LENGTH	WIDTH	HEIGHT	DIAMETER	BASE	CC	TAP
1	Cup Pull	Brushed Nickel	3-1/16	1-1/8	15/16			64mm	8-32
2	Cup Pull	Brushed Antique Copper	3-1/16	1-1/8	15/16			64mm	8-32
3	Cup Pull	Brushed Black Nickel	3-1/16	1-1/8	15/16			64mm	8-32
4	Cup Pull	Brushed Antique Brass	3-1/16	1-1/8	15/16			64mm	8-32
5	Pull	Brushed Nickel	5-1/4	5/8	15/16		7/8	96mm	8-32
6	Pull	Brushed Antique Copper	5-1/4	5/8	15/16		7/8	96mm	8-32
7	Pull	Brushed Black Nickel	5-1/4	5/8	15/16		7/8	96mm	8-32
8	Pull	Brushed Antique Brass	5-1/4	5/8	15/16		7/8	96mm	8-32
9	Knob	Brushed Antique Copper			1-1/8	1-3/16	5/8		8-32
10	Knob	Brushed Black Nickel			1-1/8	1-3/16	5/8		8-32
11	Knob	Brushed Antique Brass			1-1/8	1-3/16	5/8		8-32
12	Knob	Brushed Nickel			1-1/8	1-3/16	5/8		8-32



Designers' Group 1



## Euro Traditions

	PART NO.	TYPE	FINISH	LENGTH	WIDTH	HEIGHT	DIAMETER	BASE	CC	TAP
1	2920-1BPN-P	Knob	Brushed Nickel			1-1/16	1-3/16	3/4		8-32
2	2921-1BBN-P	Knob	Brushed Black Nickel			1-1/16	1-3/16	3/4		8-32
3	2923-1BAC-P	Knob	Brushed Antique Copper			1-1/16	1-3/16	3/4		8-32
4	2924-1BAP-P	Knob	Brushed Antique Pewter			1-1/16	1-3/16	3/4		8-32
5	2927-155-P	Knob	Matte Black			1-1/16	1-3/16	3/4		8-32
6	2928-1FE-P	Knob	Dull Rust			1-1/16	1-3/16	3/4		8-32
7	2930-1BPN-P	Pull	Brushed Nickel	4-5/16	9/16	1-1/16		9/16	96mm	8-32
8	2931-1BBN-P	Pull	Brushed Black Nickel	4-5/16	9/16	1-1/16		9/16	96mm	8-32
9	2933-1BAC-P	Pull	Brushed Antique Copper	4-5/16	9/16	1-1/16		9/16	96mm	8-32
10	2934-1BAP-P	Pull	Brushed Antique Pewter	4-5/16	9/16	1-1/16		9/16	96mm	8-32
11	2937-155-P	Pull	Matte Black	4-5/16	9/16	1-1/16		9/16	96mm	8-32
12	2938-1FE-P	Pull	Dull Rust	4-5/16	9/16	1-1/16		9/16	96mm	8-32



Designers' Group 1



## Euro Classica

	PART NO.	TYPE	FINISH	LENGTH	WIDTH	HEIGHT	DIAMETER	BASE	CC	TAP
	1	7081-1BPN-C	Pull	Brushed Nickel	4-3/8	1/2	1-3/16	9/16	96mm	M4
	2	7082-1BT-C	Pull	Brushed Tin	4-3/8	1/2	1-3/16	9/16	96mm	M4
	3	7083-1DAB-C	Pull	Dull Antique Brass	4-3/8	1/2	1-3/16	9/16	96mm	M4
	4	7084-1BPN-C	Pull	Brushed Nickel	6-3/8	9/16	1-1/8	3/4	128mm	M4
	5	7085-1BT-C	Pull	Brushed Tin	6-3/8	9/16	1-1/8	3/4	128mm	M4
	6	7086-1DAB-C	Pull	Dull Antique Brass	6-3/8	9/16	1-1/8	3/4	128mm	M4
	7	7087-1BPN-C	Knob	Brushed Nickel			1-1/8	1-3/8	15/16	M4
	8	7088-1BT-C	Knob	Brushed Tin			1-1/8	1-3/8	15/16	M4
	9	7089-1DAB-C	Knob	Dull Antique Brass			1-1/8	1-3/8	15/16	M4
	10	7090-1BPN-C	Knob	Brushed Nickel	1-3/8	7/8	1-3/8	5/8		M4
	11	7091-1BT-C	Knob	Brushed Tin	1-3/8	7/8	1-3/8	5/8		M4
	12	7092-1DAB-C	Knob	Dull Antique Brass	1-3/8	7/8	1-3/8	5/8		M4
	13	7093-1BPN-C	Knob	Brushed Nickel			1-1/8	1-3/8	1-1/16	M4
	14	7094-1BT-C	Knob	Brushed Tin			1-1/8	1-3/8	1-1/16	M4
	15	7095-1DAB-C	Knob	Dull Antique Brass			1-1/8	1-3/8	1-1/16	M4
	16	7096-1BPN-C	Knob	Brushed Nickel			1-1/4	1-3/8	1-1/16	M4
	17	7097-1BT-C	Knob	Brushed Tin			1-1/4	1-3/8	1-1/16	M4
	18	7099-1DAB-C	Knob	Dull Antique Brass			1-1/4	1-3/8	1-1/16	M4



Designers' Group 2



## Euro Retro

	PART NO.	TYPE	FINISH	LENGTH	WIDTH	HEIGHT	DIAMETER	BASE	CC	TAP
	1	2940-1TN-C	Pull Tin	5-7/8	13/16	1-1/4		9/16	128mm	M4
	2	2941-1ALU-C	Pull Aluminum	5-7/8	13/16	1-1/4		9/16	128mm	M4
	3	2942-1DAB-C	Pull Dull Antique Brass	5-7/8	13/16	1-1/4		9/16	128mm	M4
	4	2943-1BPN-C	Pull Brushed Nickel	5-7/8	13/16	1-1/4		9/16	128mm	M4
	5	2944-1TN-C	Knob Tin			1	13/16	3/8		M4
	6	2945-1ALU-C	Knob Aluminum			1	13/16	3/8		M4
	7	2946-126-C	Knob Polished Chrome			1	13/16	3/8		M4
	8	2947-1DAB-C	Knob Dull Antique Brass			1	13/16	3/8		M4
	9	2948-1BPN-C	Knob Brushed Nickel			1	13/16	3/8		M4
	10	2949-1TN-C	Cup Pull Tin	5-1/8	1-3/8	1			64mm	M4
	11	2950-1ALU-C	Cup Pull Aluminum	5-1/8	1-3/8	1			64mm	M4
	12	2951-126-C	Cup Pull Polished Chrome	5-1/8	1-3/8	1			64mm	M4
	13	2952-1DAB-C	Cup Pull Dull Antique Brass	5-1/8	1-3/8	1			64mm	M4
	14	2953-1BPN-C	Cup Pull Brushed Nickel	5-1/8	1-3/8	1			64mm	M4
	15	2954-1TN-C	Knob Tin			15/16	1-3/16	13/16		M4
	16	2957-1DAB-C	Knob Dull Antique Brass			15/16	1-3/16	13/16		M4
	17	7011-1BPN-C	Knob Brushed Nickel			7/8	1-3/16	13/16		M4
	18	7012-126-C	Knob Polished Chrome			7/8	1-3/16	13/16		M4



Designers' Group 3



## Atlantis

	PART NO.	TYPE	FINISH	LENGTH	WIDTH	HEIGHT	DIAMETER	BASE	CC	TAP
1	0020-1SB-P	Pull	Satin Brass	5	3/8	1		7/8	3	8-32
2	0021-1SB-P	Knob	Satin Brass	1-5/8	1	1-1/16		7/16		8-32
3	2903-1BPN-P	Knob	Brushed Nickel	1-5/8	1	1-1/16		7/16		8-32
4	2904-1BBN-P	Knob	Brushed Black Nickel	1-5/8	1	1-1/16		7/16		8-32
5	2905-1BAC-P	Knob	Brushed Antique Copper	1-5/8	1	1-1/16		7/16		8-32
6	2906-102-P	Knob	Antique English	1-5/8	1	1-1/16		7/16		8-32
7	2907-1FE-P	Knob	Dull Rust	1-5/8	1	1-1/16		7/16		8-32
8	2908-1BAP-P	Knob	Brushed Antique Pewter	1-5/8	1	1-1/16		7/16		8-32
9	2910-1BPN-P	Pull	Brushed Nickel	5	3/8	1		7/8	3	8-32
10	2911-1BBN-P	Pull	Brushed Black Nickel	5	3/8	1		7/8	3	8-32
11	2913-1BAC-P	Pull	Brushed Antique Copper	5	3/8	1		7/8	3	8-32
12	2915-102-P	Pull	Antique English	5	3/8	1		7/8	3	8-32
13	2918-1FE-P	Pull	Dull Rust	5	3/8	1		7/8	3	8-32
14	2919-1BAP-P	Pull	Brushed Antique Pewter	5	3/8	1		7/8	3	8-32



Designers' Group 1



## Newport

	PART NO.	TYPE	FINISH	LENGTH	WIDTH	HEIGHT	DIAMETER	BASE	CC	TAP
1	4980-303-P	Pull	Polished Brass	4-1/2	7/16	1-3/8		7/16	4	8-32
2	4981-302-P	Pull	Antique English/Solid Brass	3-3/4	9/16	1-3/16		5/16	3	8-32
3	4982-302-P	Knob	Antique English/Solid Brass			1-1/8	1-1/4	9/16		8-32
4	4990-303-P	Pull	Polished Brass	3-3/4	9/16	1-3/16		3/8	3	8-32
5	4991-3BPN-P	Pull	Brushed Nickel	3-3/4	9/16	1-3/16		3/8	3	8-32
6	4992-3BAC-P	Pull	Brushed Antique Copper	3-3/4	9/16	1-3/16		3/8	3	8-32
7	4993-3BBN-P	Pull	Brushed Black Nickel	3-3/4	9/16	1-3/16		3/8	3	8-32
8	4994-303-P	Knob	Polished Brass			1-1/8	1-1/4	9/16		8-32
9	4995-3BPN-P	Knob	Brushed Nickel			1-1/8	1-1/4	9/16		8-32
10	4996-3BAC-P	Knob	Brushed Antique Copper			1-1/8	1-1/4	9/16		8-32
11	4997-3BBN-P	Knob	Brushed Black Nickel			1-1/8	1-1/4	9/16		8-32
12	4998-302-P	Pull	Antique English	4-1/2	7/16	1-3/8		7/16	4	8-32
13	4999-3BPN-P	Pull	Brushed Nickel	4-1/2	7/16	1-3/8		7/16	4	8-32
14	5000-3BAC-P	Pull	Brushed Antique Copper	4-1/2	7/16	1-3/8		7/16	4	8-32
15	5001-3BBN-P	Pull	Brushed Black Nickel	4-1/2	7/16	1-3/8		7/16	4	8-32
16	5002-302-P	Knob	Antique English			1-1/16	1-3/8	11/16		8-32
17	5003-303-P	Knob	Polished Brass			1-1/16	1-3/8	11/16		8-32
18	5004-3BPN-P	Knob	Brushed Nickel			1-1/16	1-3/8	11/16		8-32
19	5005-3BAC-P	Knob	Brushed Antique Copper			1-1/16	1-3/8	11/16		8-32
20	5006-3BBN-P	Knob	Brushed Black Nickel			1-1/16	1-3/8	11/16		8-32



Designers' Group 2



## American Craftsman

	PART NO.	TYPE	FINISH	LENGTH	WIDTH	HEIGHT	DIAMETER	BASE	CC	TAP
	1	2000-1AI-P	Pull	Antique Iron	3-3/8	1/2	1	1/2	3	8-32
	2	2001-1AI-P	Knob	Antique Iron			1-3/8	9/16		8-32
	3	2002-1AI-P	Knob	Antique Iron			1-1/4	1		8-32
	4	2003-1AI-P	Pull	Antique Iron	1-7/8	1-1/8	1	3/8		8-32
	5	2004-1AI-P	Pull	Antique Iron	4-1/2	1/4	1-5/8	7/16	3	8-32
	6	2005-1MN-P	Pull	Matte Nickel	3-5/8	1/2	1	1/2	3	8-32
	7	2006-1MN-P	Knob	Matte Nickel			1	1-3/8	9/16	8-32
	8	2007-1MN-P	Knob	Matte Nickel			1-1/4	1-1/4	1	8-32
	9	2050-155-P	Knob	Black			1-3/16	1-3/8	7/8	8-32
	10	2051-1FE-P	Knob	Dull Rust			1-3/16	1-3/8	7/8	8-32
	11	2052-155-P	Pull	Black	5-13/16	7/16	1-3/8	3/4	96mm	8-32
	12	2053-1FE-P	Pull	Dull Rust	5-13/16	7/16	1-3/8	3/4	96mm	8-32
	13	2062-1AB-P	Knob	Antique Brass			1-3/16	1-3/8	7/8	8-32
	14	2063-1AP-P	Knob	Antique Pewter			1-3/16	1-3/8	7/8	8-32
	15	2064-1AB-P	Pull	Antique Brass	5-13/16	7/16	1-3/8	3/4	96mm	8-32
	16	2065-1AP-P	Pull	Antique Pewter	5-13/16	7/16	1-3/8	3/4	96mm	8-32
	17	2236-1DC-P	Pull	Dark Copper	4-1/2	3/8	3/4	3/4	3	8-32
	18	2237-1DC-P	Knob	Dark Copper	1-1/4	1-1/4	1-1/8	1-1/4	5/8	8-32



American Craftsman

Craft-Mission



## American Mission

	PART NO.	TYPE	FINISH	LENGTH	WIDTH	HEIGHT	DIAMETER	BASE	CC	TAP
	1	Knob	Dull Black			1-1/8	1-1/4	9/16		8-32
	2	Knob	Dull Rust			1-1/8	1-1/4	9/16		8-32
	3	Pull	Dull Black	4-5/8	9/16	1		13/16	3	8-32
	4	Pull	Dull Rust	4-5/8	9/16	1		13/16	3	8-32
	5	Knob	Dark Antique			1	1-1/4	9/16		8-32
	6	Knob	Antique Pewter			1	1-1/4	9/16		8-32
	7	Pull	Dark Antique	4-5/8	9/16	1		13/16	3	8-32
	8	Pull	Antique Pewter	4-5/8	9/16	1		13/16	3	8-32
	9	Bail Pull	Rustic Brass	3	1-3/4	11/16		1-3/4	1-1/2	8-32
	10	Knob	Rustic Brass			13/16	1	3/8		8-32
	11	Cup Pull	Rustic Brass	3	1-1/4	7/8			1-1/4	8-32
	12	Knob	Rustic Brass			1	1-3/8	3/8		8-32
	13	Knob	Rustic Brass			1-3/8	1-1/2	1-5/8		8-32
	14	Cup Pull	Rustic Pewter	3	1-1/4	7/8			1-1/4	8-32
	15	Knob	Rustic Pewter			1	1-3/8	3/8		8-32
	16	Knob	Rustic Pewter			1-3/8	1-1/2	1-5/8		8-32



American Mission



Craft-Mission



2



## American Heritage

	PART NO.	TYPE	FINISH	LENGTH	WIDTH	HEIGHT	DIAMETER	BASE	CC	TAP
1	2500-5CR-B	Knob	White Crackle			1-1/8	1-1/4	5/8		8-32
2	4983-5CR-B	Knob	Almond Crackle			1-1/8	1-3/8	5/8		8-32
3	9860-1AP-B	Pull	Antique Pewter	3-7/16	9/16	5/8		11/16	3	8-32
4	9861-1AP-B	Ring Pull	Antique Pewter	1-5/8	1-5/8	3/8	1-1/2	5/8		8-32
5	9862-1AP-B	B/P	Antique Pewter		13/16	1/8	13/16	13/16		
6	9863-1AP-B	Knob	Antique Pewter		1-3/8	7/8	1-7/16	3/8		8-32
7	9864-1AP-B	Bail Pull	Antique Pewter	5-7/8	2-1/8	3/4		1-3/8	4-3/8	8-32
8	9865-1AP-B	Ring Pull	Antique Pewter	2	1-3/4	5/8		5/8		8-32
9	9866-1AP-B	B/P	Antique Pewter	1-5/16	1-3/8	1/4	1-7/16	1-3/8		
10	9867-1AP-B	Knob	Antique Pewter		1-3/8	1	1-3/8	3/8		8-32
11	9868-1AP-B	Knob	Antique Pewter		1-3/8	1	1-3/8	3/8		8-32
12	9869-1AP-B	Pull	Antique Pewter	4-3/4	7/8	7/8		13/16	3	8-32
13	9870-1AP-B	Pull	Antique Pewter	2	1/2	1/2		7/16		8-32
14	9871-1FB-B	Knob	Dark Antique		1-3/8	1	1-3/8	3/8		8-32
15	9872-1CT-B	Knob	Antique Coppertone		1-3/8	1	1-3/8	3/8		8-32
16	9873-1CT-B	Pull	Antique Coppertone	4-3/4	7/8	7/8		13/16	3	8-32
17	9874-1CT-B	Knob	Antique Coppertone		1-3/8	1	1-3/8	3/8		8-32
18	9875-1AP-B	Pull	Antique Pewter	5-1/16	7/8	13/16		1/2	4-1/4	8-32
19	9876-1AP-B	Knob	Antique Pewter		1-1/2	1	1-1/2	3/8		8-32



American Heritage



## Encore

	PART NO.	TYPE	FINISH	LENGTH	WIDTH	HEIGHT	DIAMETER	BASE	CC	TAP
1	3017-155-P	Pull	Dull Black	5-3/8	9/16	1-1/4		5/16	128mm	8-32
2	3030-1BPN-P	Pull	Brushed Nickel	5-3/16	5/16	1-5/16		1/2	96mm	8-32
3	3031-1BPN-P	Pull	Brushed Nickel	6-7/16	5/16	1-5/8		1/2	128mm	8-32
4	3032-1BPN-P	Knob	Brushed Nickel	1-11/16	1/2	1-3/16		1/2		8-32
5	7053-155-C	Pull	Dull Black	4-1/4	9/16	1		1/2	96mm	M4
6	7054-1BPN-C	Pull	Brushed Nickel	4-1/4	9/16	1		1/2	96mm	M4
7	7055-107-C	Pull	Polished Gold	4-1/4	9/16	1		1/2	96mm	M4
8	7056-126-C	Pull	Polished Chrome	4-1/4	9/16	1		1/2	96mm	M4
9	7058-155-C	Knob	Dull Black	1-1/4	1	1	1-1/4	7/16		M4
10	7059-1BPN-C	Knob	Brushed Nickel	1-1/4	1	1	1-1/4	7/16		M4
11	7060-107-C	Knob	Polished Gold	1-1/4	1	1	1-1/4	7/16		M4
12	7062-126-C	Knob	Polished Chrome	1-1/4	1	1	1-1/4	7/16		M4
13	7063-148-C	Pull	White	5-3/8	5/8	1-1/16		11/16	96mm	M4
14	7064-107-C	Pull	Polished Gold	5-3/8	5/8	1-1/16		11/16	96mm	M4
15	7065-126-C	Pull	Polished Chrome	5-3/8	5/8	1-1/16		11/16	96mm	M4
16	7066-1BPN-C	Pull	Brushed Nickel	5-3/8	5/8	1-1/16		11/16	96mm	M4



Encore



## Valencia

	PART NO.	TYPE	FINISH	LENGTH	WIDTH	HEIGHT	DIAMETER	BASE	CC	TAP
1	7000-107-C	Pull	Polished Gold	4-15/16	13/16	1		11/16	96mm	M4
2	7001-1BPN-C	Pull	Brushed Nickel	4-15/16	13/16	1		11/16	96mm	M4
3	7002-126-C	Pull	Polished Chrome	4-15/16	13/16	1		11/16	96mm	M4
4	7004-1BBZ-C	Pull	Brushed Bronze	4-15/16	13/16	1		11/16	96mm	M4
5	7005-107-C	Knob	Polished Gold			1	1-3/8	15/16		M4
6	7006-1BPN-C	Knob	Brushed Nickel			1	1-3/8	15/16		M4
7	7007-126-C	Knob	Polished Chrome			1	1-3/8	15/16		M4
8	7009-1BBZ-C	Knob	Brushed Bronze			1	1-3/8	15/16		M4
9	7010-107-C	Knob	Polished Gold			7/8	1-3/16	13/16		M4
10	7011-1BPN-C	Knob	Brushed Nickel			7/8	1-3/16	13/16		M4
11	7012-126-C	Knob	Polished Chrome			7/8	1-3/16	13/16		M4
12	7014-1BBZ-C	Knob	Brushed Bronze			7/8	1-3/16	13/16		M4
13	7015-107-C	Pull	Polished Gold	4-7/16	1/2	1-3/16		7/16	96mm	M4
14	7016-1BPN-C	Pull	Brushed Nickel	4-7/16	1/2	1-3/16		7/16	96mm	M4
15	7017-126-C	Pull	Polished Chrome	4-7/16	1/2	1-3/16		7/16	96mm	M4
16	7018-155-C	Pull	Dull Black	4-7/16	1/2	1-3/16		7/16	96mm	M4
17	7019-198-C	Pull	Black Nickel	4-7/16	1/2	1-3/16		7/16	96mm	M4
18	7020-107-C	Knob	Polished Gold	1-3/16	3/4	1-3/16	1-3/16	9/16		M4
19	7021-1BPN-C	Knob	Brushed Nickel	1-3/16	3/4	1-3/16	1-3/16	9/16		M4
20	7022-126-C	Knob	Polished Chrome	1-3/16	3/4	1-3/16	1-3/16	9/16		M4
21	7023-155-C	Knob	Dull Black	1-3/16	3/4	1-3/16	1-3/16	9/16		M4
22	7024-198-C	Knob	Black Nickel	1-3/16	3/4	1-3/16	1-3/16	9/16		M4
23	8089-155-P	Knob	Dull Black			1-1/8	1-1/4	5/8		8-32

Valencia



# Europa

PART NO.	TYPE	FINISH	LENGTH	WIDTH	HEIGHT	DIAMETER	BASE	CC	TAP
1	Knob	Clear Crystal Swirl/Gold			1-5/8	30mm	1		M4
2	Knob	Clear Crystal Swirl/Chrome			1-5/8	30mm	1		M4
3	Knob	Dull Crystal Swirl/Gold			1-5/8	30mm	1		M4
4	Knob	Dull Crystal Swirl/Chrome			1-5/8	30mm	1		M4
5	Knob	Crystal w/Bubbles/Gold			1-5/8	30mm	1		M4
6	Knob	Crystal w/Bubbles/Chrome			1-5/8	30mm	1		M4
7	Knob	Clear Crystal Ball/Gold			1-5/8	30mm	1		M4
8	Knob	Clear Crystal Ball/Chrome			1-5/8	30mm	1		M4
9	Knob	Frosted Crystal Ball/Gold			1-5/8	30mm	1		M4
10	Knob	Frosted Crystal Ball/Chrome			1-5/8	30mm	1		M4
11	Knob	Faceted Crystal Ball/Gold			1-5/8	30mm	1		M4
12	Knob	Faceted Crystal Ball/Chrome			1-5/8	30mm	1		M4
13	Pull	Tin/White	4-3/8	5/8	1-1/4		9/16	96mm	M4
14	Pull	Gold/White	4-3/8	5/8	1-1/4		9/16	96mm	M4
15	Pull	Old Bronze/White	4-3/8	5/8	1-1/4		9/16	96mm	M4
16	Knob	Tin/White			1-3/16	37mm	7/8		M4
17	Knob	Gold/White			1-3/16	37mm	7/8		M4
18	Knob	Old Bronze/White			1-3/16	37mm	7/8		M4
19	Knob	Tin/White			1-1/4	37mm	7/8		M4
20	Knob	Gold/White			1-1/4	37mm	7/8		M4
21	Knob	Old Bronze/White			1-1/4	37mm	7/8		M4



Europa  
Berenson



## Barcelona

	PART NO.	TYPE	FINISH	LENGTH	WIDTH	HEIGHT	DIAMETER	BASE	CC	TAP
1	6920-106-C	Pendant	Bronze	2-1/16	11/16	3/4		3/4		M4
2	6926-107-C	Pull	Polished Gold	4-5/16	9/16	1-3/16		9/16	96mm	M4
3	6927-188-C	Pull	Gold/White	4-5/16	9/16	1-3/16		9/16	96mm	M4
4	6928-190-C	Pull	Gold/Pearl	4-5/16	9/16	1-3/16		9/16	96mm	M4
5	6929-106-C	Pull	Bronze	4-5/16	9/16	1-3/16		9/16	96mm	M4
6	6980-107-C	B/P Knob	Polished Gold	4-7/8	1	1/16		1		
7	6981-106-C	B/P Knob	Bronze	4-7/8	1	1/16		1		
8	6982-107-C	B/P Pendant	Polished Gold	4-7/8	1	1/16		1		
9	6983-106-C	B/P Pendant	Bronze	4-7/8	1	1/16		1		
10	6984-107-C	B/P Knob	Polished Gold	4-3/8	15/16	1/8		15/16		
11	6986-106-C	B/P Pendant	Bronze	4-3/8	15/16	1/8		15/16		
12	6987-188-C	Pendant	Gold/White	2-1/16	11/16	3/4		11/16		M4
13	6988-190-C	Pendant	Gold/Pearl	2-1/16	11/16	3/4		11/16		M4
14	6990-107-C	Pendant	Polished Gold	2-1/16	11/16	3/4		11/16		M4
15	6991-107-C	B/P Pendant	Polished Gold	4-3/8	15/16	1/8		15/16		
16	6995-107-C	Knob	Polished Gold			1-1/16	1-3/16	15/16		M4
17	6996-106-C	Knob	Bronze			1-1/16	1-3/16	15/16		M4
18	6997-190-C	Knob	Gold/Pearl			1-1/16	1-3/16	15/16		M4



Barcelona  
Berenson



## Cambridge

	PART NO.	TYPE	FINISH	LENGTH	WIDTH	HEIGHT	DIAMETER	BASE	CC	TAP
1	1962-303-B	B/P	Polished Brass	3-3/16	1-1/8	1/16		1-1/8		
2	2469-303-P	Knob	Polished Brass			1-1/16	1	1		8-32
3	3329-3BPN-P	Knob	Brushed Nickel			1-1/8	1-1/4	3/4		8-32
4	5231-303-C	Knob	Polished Brass			15/16	1	5/8		8-32
5	5238-303-P	Knob	Polished Brass			1-1/16	1-3/16	3/4		8-32
6	9825-303-P	Bail Pull	Polished Brass	3-1/2	2-1/8	1/2			2-1/2	8-32
7	9826-303-P	B/P	Polished Brass	3-1/2	2-1/16	1/32				
8	9829-3BPN-B	Cup Pull	Brushed Nickel	3-5/8	1-5/8	3/4			3	8-32
9	9830-303-P	Bail Pull	Polished Brass	4-3/16	2-1/2	1/2			3	8-32
10	9831-303-P	Bail Pull	Polished Brass	3-5/8	1-3/4	5/8	1	1	2-1/2	8-32
11	9832-303-P	Bail Pull	Polished Brass	4-5/8	2	5/8	1	1	3	8-32
12	9833-303-B	Cup Pull	Polished Brass	3-5/8	1-5/8	15/16			3	8-32
13	9834-303-B	Cup Pull	Polished Brass	3-5/8	1-5/8	3/4			3	8-32
14	9836-947-C	Knob	Acrylic/Brass Base			1-1/8	1-3/16	1		8-32
15	9850-303-C	Bail Pull	Polished Brass	4-1/8	2-11/16	1/2			3	8-32
16	9930-303-B	Knob	Polished Brass			1	1-1/4	5/8		8-32
17	9940-3BPN-P	Pull	Brushed Nickel	4-5/8	3/8	1-1/4		3/4	3	8-32
18	9943-3BPN-P	Knob	Brushed Nickel			1	1-1/4	1		8-32



Cambridge  
Berenson



# Canterbury

	PART NO.	TYPE	FINISH	LENGTH	WIDTH	HEIGHT	DIAMETER	BASE	CC	TAP
1	1025-303-C	Knob	Polished Brass			1-7/16	1-3/16	5/8		8-32
2	1030-303-P	Knob	Polished Brass			1-1/16	1-3/8	5/8		8-32
3	2301-303-P	B/P	Polished Brass			1/32	1-1/4	1-1/4		
4	2302-303-B	B/P	Polished Brass	4	1	1/32		1		
5	2721-303-P	Pull & B/P	Polished Brass	4-15/16	1-3/16	15/16		1/4 & 13/16	3	8-32
6	2802-303-B	Pull	Polished Brass	4-1/8	5/8	1		5/8	96mm	8-32
7	3330-303-P	Knob	Polished Brass			1-1/8	1-1/4	3/4		8-32
8	4329-303-B	Knob	Polished Brass			7/8	1	5/8		8-32
9	4330-303-P	Knob	Polished Brass			1-1/8	1-1/4	3/4		8-32
10	4331-303-C	Knob	Polished Brass			1-3/16	1-1/2	7/8		8-32
11	6275-303-B	Knob	Polished Brass			1-1/8	1-1/4	1-3/16		8-32
12	8850-303-P	Knob	Polished Brass			1-3/16	1-1/4	3/4		8-32
13	8851-326-P	Knob	Polished Chrome			1-3/16	1-1/4	3/4		8-32
14	8852-398-P	Knob	Black Nickel			1-3/16	1-1/4	3/4		8-32
15	8854-3BPN-P	Knob	Brushed Nickel			1-3/16	1-1/4	3/4		8-32
16	9105-303-P	Knob & B/P	Polished Brass			1-3/16	1-1/4	7/16		8-32
17	9106-303-C	Knob & B/P	Polished Brass			1-7/16	1-1/2	1-1/4		8-32
18	9110-303-C	Knob & B/P	Polished Brass			1-7/16	1-1/4	1-1/4		8-32
19	9111-303-C	Knob & B/P	Polished Brass			1-1/2	1-1/2	1-7/16		8-32
20	9531-303-P	Pull	Polished Brass	3-3/8	1/2	13/16		9/16	3	8-32
21	9533-303-P	Pull	Polished Brass	3-3/4	7/16	7/8		7/16	3-1/2	8-32
22	9953-303-B	Pull	Polished Brass	3-15/16	7/16	1-1/8		3/8	3	8-32



Canterbury  
Berenson



## Manchester

	PART NO.	TYPE	FINISH	LENGTH	WIDTH	HEIGHT	DIAMETER	BASE	CC	TAP
	1	Pull	Almond/Polished Brass	3-5/8	9/16	1-1/4		9/16	3	8-32
	2	Knob	Almond/Polished Brass			15/16	1-3/16	1/2		8-32
	3	B/P	Polished Brass	5-1/2	15/16	1/32		15/16	3	
	4	B/P	Polished Brass	4	15/16	1/32		15/16		
	5	Knob	Polished Brass			1-1/8	1-3/16	1-3/16		8-32
	6	Knob	Polished Brass			1-3/8	1-3/8	1-3/8		8-32
	7	Knob	Polished Chrome/White			3/4	1	11/16		8-32
	8	Knob	Polished Brass/White			3/4	1	11/16		8-32
	9	Pull	Polished Chrome/White	3-5/8	9/16	1-1/4		9/16	3	8-32
	10	Knob	Polished Chrome/White			15/16	1-3/16	1/2		8-32
	11	Pull	Polished Brass	4-15/16	3/8	1		3/8	3	8-32
	12	Pull	Polished Brass	6	3/8	1		3/8	4	8-32
	13	Pull	Black Nickel	4-15/16	3/8	1		3/8	3	8-32
	14	Pull	Black Nickel	6	3/8	1		3/8	4	8-32
	15	Pull	Brushed Nickel/White	3-5/8	9/16	1-1/4		1/2	3	8-32
	16	Knob	Brushed Nickel/White			15/16	1-3/16	1/2		8-32
	17	Knob	Polished Chrome/White			7/8	1-3/16	11/16		8-32
	18	Pull	Almond/Polished Brass	3-5/8	9/16	1-1/4		5/8	3	8-32
	19	Knob	Almond/Polished Brass			15/16	1-3/16	9/16		8-32
	20	Pull	White/Polished Brass	3-5/8	9/16	1-1/4		5/8	3	8-32
	21	Knob	White/Polished Brass			15/16	1-3/16	9/16		8-32
	22	Knob	Polished Brass			1-1/8	1-1/4	3/4		8-32



Manchester



## Cadence

	PART NO.	TYPE	FINISH	LENGTH	WIDTH	HEIGHT	DIAMETER	BASE	CC	TAP
	1	Knob	Polished Brass/White			1-1/16	1-1/4	5/8		8-32
	2	Knob	Polished Chrome/White			1-1/16	1-1/4	5/8		8-32
	3	Knob	Black			1-1/8	1-1/16	1/2		M4
	4	Pull	White	5	7/16	1-1/16		1/2	96mm	M4
	5	Pull	Black	5	7/16	1-1/16		1/2	96mm	M4
	6	Pull	Polished Chrome	5	7/16	1-1/16		1/2	96mm	M4
	7	Pull	Polished Gold	5	7/16	1-1/16		1/2	96mm	M4
	8	Knob	White			1-1/8	1-1/16	1/2		M4
	9	Pull	Satin Nickel	5	7/16	1-1/16		1/2	96mm	M4
	10	Knob	Polished Chrome			1-5/16	1-3/16	3/8		M4
	11	Knob	Polished Gold			1-5/16	1-3/16	3/8		M4
	12	Knob	White			1-5/16	1-3/16	3/8		M4
	13	Knob	Black			1-5/16	1-3/16	3/8		M4
	14	Knob	Black/White			1-5/16	1-3/16	3/8		M4
	15	Knob	Polished Gold			1-1/16	1-1/4	11/16		8-32
	16	Knob	Polished Chrome			1-1/16	1-1/4	11/16		8-32
	17	Knob	Black Nickel			1-1/16	1-1/4	11/16		8-32
	18	Knob	Antique Silver			1-1/16	1-1/4	11/16		8-32
	19	Pull	Polished Gold	4-1/32	5/16	1-1/8		1/4	96mm	8-32
	20	Pull	Polished Chrome	4-1/32	5/16	1-1/8		1/4	96mm	8-32
	21	Pull	Black Nickel	4-1/32	5/16	1-1/8		1/4	96mm	8-32
	22	Pull	Antique Silver	4-1/32	5/16	1-1/8		1/4	96mm	8-32
	23	Pull	Brushed Nickel	7-5/16	1/2	1-5/16		1/2	128mm	8-32



Cadence



# Allegro

	PART NO.	TYPE	FINISH	LENGTH	WIDTH	HEIGHT	DIAMETER	BASE	CC	TAP
1	6850-326-C	Pull	Polished Chrome/Brass	3-13/16	5/16	1-3/16		5/16	3-1/2	8-32
2	6851-398-C	Pull	Black Nickel/Polished Brass	3-13/16	5/16	1-3/16		5/16	3-1/2	8-32
3	6907-316-P	Pull	Satin Nickel/Polished Brass	5-1/8	3/8	1-1/8		1/2	96mm	8-32
4	6909-398-P	Pull	Black Nickel/Polished Brass	5-1/8	3/8	1-1/8		1/2	96mm	8-32
5	6931-155-C	Pull	Black	4-11/16	3/8	1-1/8		3/8	96mm	M4
6	6932-115-C	Pull	Satin Nickel	4-11/16	3/8	1-1/8		3/8	96mm	M4
7	6998-167-C	Knob	Chrome/White			1-5/16	1-3/16	3/8		M4
8	6999-188-C	Knob	Gold/White			1-5/16	1-3/16	3/8		M4
9	7100-115-C	Pull	Satin Nickel	6-3/8	7/16	1-1/8		7/16	128mm	M4
10	7862-107-C	Pull	Polished Gold	4-11/16	3/8	1-1/8		3/8	96mm	M4
11	7863-126-C	Pull	Polished Chrome	4-11/16	3/8	1-1/8		3/8	96mm	M4
12	7864-148-C	Pull	White	4-11/16	3/8	1-1/8		3/8	96mm	M4
13	8934-198-C	Knob	Black Nickel/Gold			15/16	1-3/16	3/8		M4
14	8935-116-C	Knob	Satin Nickel/Gold			15/16	1-3/16	3/8		M4
15	8962-155-C	Knob	White/Black			15/16	1-3/16	3/8		M4
16	9837-107-C	Pull	Polished Gold	4-1/4	1/2	1-1/16		1/2	96mm	8-32
17	9838-126-P	Pull	Polished Chrome	4-1/4	1/2	1-1/16		1/2	96mm	8-32
18	9839-148-C	Pull	White	4-1/4	1/2	1-1/16		1/2	96mm	8-32
19	9840-107-B	B/P	Polished Gold			1/16	5/8	5/8		
20	9841-126-B	B/P	Polished Chrome			1/16	5/8	5/8		
21	9842-148-B	B/P	White			1/16	5/8	5/8		
22	9845-107-B	B/P	Polished Gold			1/16	3/4	3/4		
23	9846-126-B	B/P	Polished Chrome			1/16	3/4	3/4		
24	9847-148-B	B/P	White			1/16	3/4	3/4		



Allegro



Reprise

	PART NO.	TYPE	FINISH	LENGTH	WIDTH	HEIGHT	DIAMETER	BASE	CC	TAP
1	1045-115-P	Pull	Satin Nickel	4-5/8	7/16	1-3/16		5/16	96mm	8-32
2	1913-1BPN-P	Knob	Brushed Nickel			1-3/16	1-3/16	11/16		8-32
3	6188-103-P	Pull	Polished Brass	4-3/8	5/16	1-1/16		9/16	3	8-32
4	6189-126-P	Pull	Polished Chrome	4-3/8	5/16	1-1/16		9/16	3	8-32
5	6190-148-P	Pull	White	4-3/8	5/16	1-1/16		9/16	3	8-32
6	6191-1BPN-P	Pull	Brushed Nickel	4-3/8	5/16	1-1/16		9/16	3	8-32
7	6935-189-C	Pull	Gold/Black	5-1/2	3/8	1-1/8		7/16	96mm	M4
8	6936-188-C	Pull	Gold/White	5-1/2	3/8	1-1/8		7/16	96mm	M4
9	6937-127-C	Pull	Chrome/Black	5-1/2	3/8	1-1/8		7/16	96mm	M4
10	6938-167-C	Pull	Chrome/White	5-1/2	3/8	1-1/8		7/16	96mm	M4
11	6939-195-C	Pull	White/Black	5-1/2	3/8	1-1/8		7/16	96mm	M4
12	7902-1VB-P	Pull	Venetian Bronze	13-1/4	3/8	1-1/4		3/8	288mm	8-32
13	7903-1VB-P	Pull	Venetian Bronze	6	3/8	1-3/16		3/8	128mm	8-32
14	7911-1BPN-P	Cup Pull	Brushed Nickel	3-3/4	1-3/8	1			3	8-32
15	9910-103-P	Knob	Polished Brass			1-1/8	1-3/16	11/16		8-32
16	9911-126-P	Knob	Polished Chrome			1-1/8	1-3/16	11/16		8-32
17	9913-1BPN-P	Knob	Brushed Nickel			1-1/8	1-3/16	11/16		8-32
18	9914-198-P	Knob	Black Nickel			1-3/16	1-3/16	11/16		8-32
19	9939-199-P	Knob	Antique Silver			7/8	1-1/4	5/16		8-32



Reprise



## Venice

	PART NO.	TYPE	FINISH	LENGTH	WIDTH	HEIGHT	DIAMETER	BASE	CC	TAP
1	9500-326-P	Pull	Polished Chrome/Brass	4-15/16	9/16	1-1/8		7/16	4	8-32
2	9501-303-P	Pull	Polished Brass	4-15/16	9/16	1-1/8		7/16	4	8-32
3	9502-747-C	Pull	Acrylic/Polished Brass	4-15/16	9/16	1-1/8		7/16	4	8-32
4	9506-326-P	Knob	Polished Chrome/Brass			1-1/4	1-1/16	7/8		8-32
5	9512-303-P	Knob	Polished Brass			1-1/16	1-1/16	11/16		8-32
6	9513-326-P	Knob	Polished Chrome/Brass			1-1/16	1-1/16	11/16		8-32
7	9514-398-C	Knob	Black Nickel/Polished Brass			1-1/16	1-1/16	11/16		8-32
8	9525-317-P	Pull	Brushed Nickel/Polished Brass	4-15/16	9/16	1-1/8		7/16	4	8-32
9	9527-317-P	Knob	Brushed Nickel/Polished Brass			1-1/4	1-3/16	7/8		8-32
10	9529-398-P	Pull	Black Nickel/Polished Brass	4-15/16	9/16	1-1/8		7/16	4	8-32
11	9535-747-P	Pull	Acrylic/Polished Chrome	4-15/16	9/16	1-1/8		7/16	4	8-32
12	9537-317-P	Knob	Brushed Nickel/Polished Brass			1-1/16	1-1/16	11/16		8-32
13	9538-317-P	Pull	Brushed Nickel/Polished Brass	3-15/16	9/16	1-1/8		7/16	3	8-32
14	9539-303-P	Pull	Polished Brass	3-15/16	9/16	1-1/8		7/16	3	8-32
15	9540-326-P	Pull	Polished Chrome/Brass	3-15/16	9/16	1-1/8		7/16	3	8-32



Venice  
Berenson

Venice



## Concord

	PART NO.	TYPE	FINISH	LENGTH	WIDTH	HEIGHT	DIAMETER	BASE	CC	TAP
	1	Pull	Black Nickel/White	5	3/4	1-1/4		3/4	3	8-32
	2	Knob	Black Nickel/White			15/16	1-1/4	5/16		8-32
	3	Knob	White			1-1/16	1-1/4	13/16		8-32
	4	Pull	Polished Brass	5-3/8	7/8	1		1	3	8-32
	5	Knob	White			1	1-3/16	11/16		8-32
	6	Knob	White			1-1/8	1-3/8	5/8		8-32
	7	Knob	Almond			1-1/8	1-3/8	5/8		8-32
	8	B/P	Polished Brass	3-15/16	1	1/32		1		
	9	B/P	Polished Brass	3	1	1/8		1		
	10	B/P	Polished Brass	5-11/16	1	1/8		1	3	
	11	Pull	Polished Brass	5	3/16	15/16		5/8	3	8-32
	12	Pull	Polished Brass/Almond	5	5/8	1-1/4		1/2	3	8-32
	13	Pull	Polished Brass/White	5	5/8	1-1/4		1/2	3	8-32
	14	Knob	Polished Brass/White			1-1/8	1-1/4	5/8		8-32
	15	Knob	Polished Brass			7/8	1-3/16	5/16		8-32
	16	B/P	Polished Chrome	3	1	1/8		1		
	17	Pull	Polished Chrome/White	5	3/4	1-1/4		3/4	3	8-32
	18	Knob	Polished Chrome/White			15/16	1-1/4	5/16		8-32
	19	Pull	Polished Chrome	5	3/16	15/16		5/8	3	8-32
	20	Knob	Polished Chrome/White			1-1/8	1-1/4	9/16		8-32
	21	Knob	Polished Brass			1-1/32	1-1/4	5/8		8-32



Concord

Berenson



## Salem

	PART NO.	TYPE	FINISH	LENGTH	WIDTH	HEIGHT	DIAMETER	BASE	CC	TAP
1	2590-103-P	Pull	Polished Brass	3-5/16	5/16	1-1/8		3/8	3	8-32
2	2591-126-P	Pull	Polished Chrome	3-5/16	5/16	1-1/8		3/8	3	8-32
3	3340-103-B	Pull	Polished Brass	3-3/8	7/16	15/16		3/8	3	8-32
4	7347-103-P	Knob	Polished Brass			7/8	1-3/16	3/8		8-32
5	7348-103-P	Pull	Polished Brass	5	5/8	15/16		9/16	3	8-32
6	7627-103-P	Pull	Polished Brass	5-11/16	5/8	7/8		11/16	3	8-32
7	7628-103-P	Pull	Polished Brass	5-11/16	7/8	7/8		7/8	3	8-32
8	8071-103-P	Pull	Brass/White	4-5/8	3/4	1-3/16		13/16	3	8-32
9	8072-134-P	Pull	Brass/Oak	5	3/4	1-1/4		3/4	3	8-32
10	8073-103-P	Pull	Brass/Almond	5	3/4	1-1/4		3/4	3	8-32
11	8074-103-P	Pull	Brass/White	5	3/4	1-1/4		3/4	3	8-32
12	8075-103-P	Pull	Polished Brass	5-1/8	1/2	3/4		1/2	3	8-32
13	8076-1BPN-P	Pull	Brushed Nickel	5-1/16	7/16	1		1/2	3	8-32
14	8078-126-P	Knob	Polished Chrome			1-1/16	1-1/4	5/8		8-32
15	8079-103-P	Knob	Polished Brass			1-1/16	1-1/4	5/8		8-32
16	8080-134-P	Knob	Brass/Oak			15/16	1-1/4	5/16		8-32
17	8081-103-P	Knob	Brass/Almond			15/16	1-1/4	5/16		8-32
18	8082-103-P	Knob	Brass/White			15/16	1-1/4	5/16		8-32
19	8085-126-P	Pull	Polished Chrome	5-1/8	1/2	3/4		1/2	3	8-32
20	8086-198-P	Pull	Black Nickel	5-1/8	1/2	3/4		1/2	3	8-32
21	8087-198-P	Knob	Black Nickel			1-1/16	1-1/4	5/8		8-32
22	9079-1BPN-P	Knob	Brushed Nickel			1-1/16	1-1/4	5/8		8-32
23	9849-1CU-P	Knob	Polished Copper			1-1/16	1-1/4	5/8		8-32



Salem

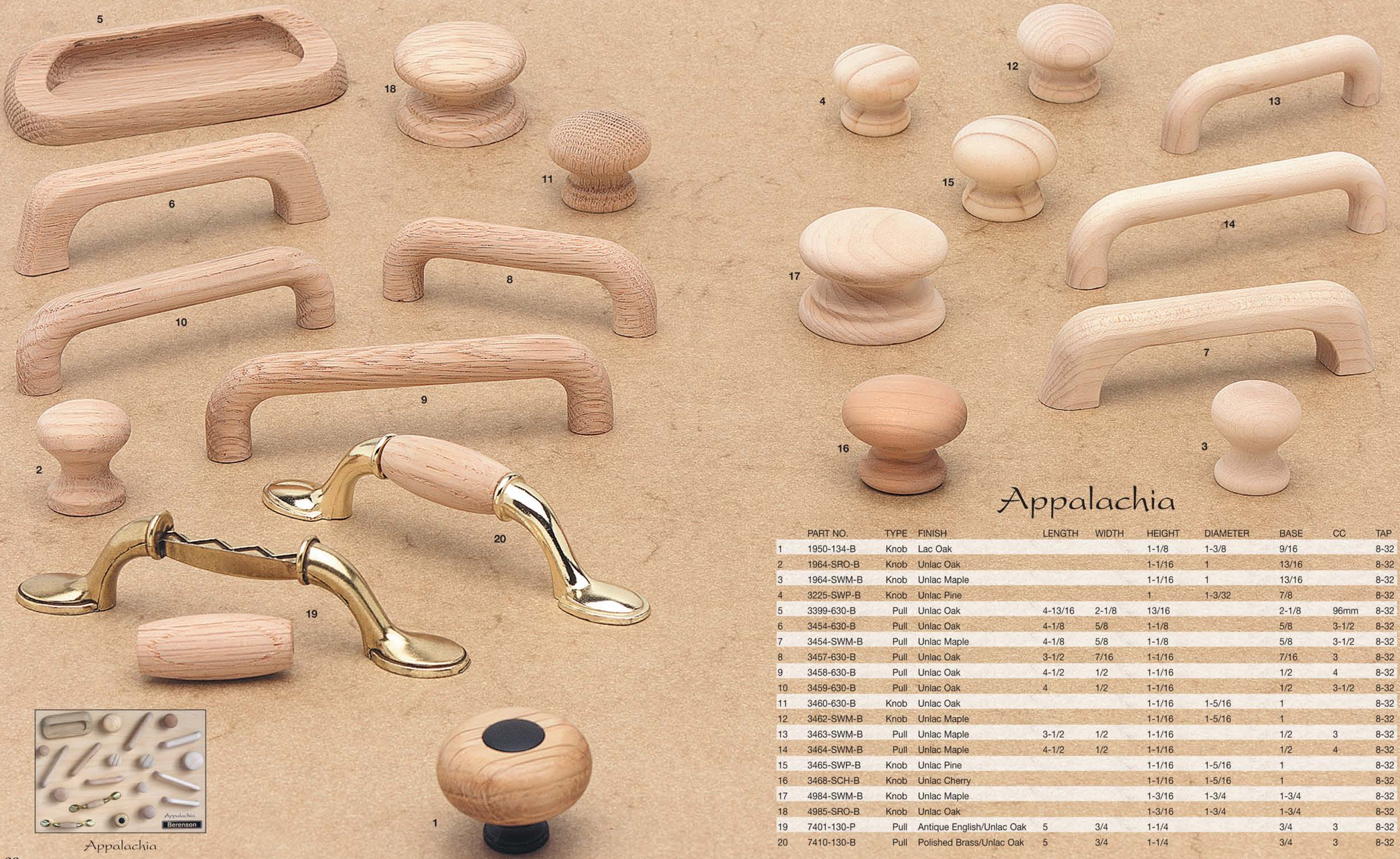


## Lexington

	PART NO.	TYPE	FINISH	LENGTH	WIDTH	HEIGHT	DIAMETER	BASE	CC	TAP
	1	Knob	White			1-1/8	1-3/8	7/8		8-32
	2	Knob	Oatmeal			1-1/8	1-3/8	7/8		8-32
	3	Knob	White/Brass & Chrome Base			1-1/2	1-1/4	7/16		8-32
	4	Pull	Antique English/Almond	5	3/4	1-1/4		3/4	3	8-32
	5	Pull	Antique English/White	5	3/4	1-1/4		3/4	3	8-32
	6	Pull	Antique English/Lac Oak	5	3/4	1-1/4		3/4	3	8-32
	7	Knob	Antique English/Lac Oak			1	1-1/4	5/8		8-32
	8	Knob	Antique English/White			1	1-1/4	5/8		8-32
	9	Knob	Antique English/Almond			1	1-1/4	5/8		8-32
	10	Knob	White			1-1/16	1-1/2	11/16		8-32
	11	Knob	White			15/16	1-1/4	5/8		8-32
	12	Knob	Almond			15/16	1-1/4	5/8		8-32
	13	Pull	Antique English	5	7/32	1		11/16	3	8-32
	14	Pull	Antique English/White	5	1/2	1-1/4		1/2	3	8-32
	15	Pull	Antique English/Almond	5	1/2	1-1/4		1/2	3	8-32
	16	B/P	Antique English	5-5/8	1	1/8		1	3	
	17	Pull	Antique English	5-3/16	9/16	5/8		9/16	3	8-32
	18	Pull	Antique English	5-1/8	3/4	1-1/4		5/8	3	8-32
	19	B/P	Antique English	3	1	1/8		1		
	20	Pull	Antique English	4-5/8	7/16	1		15/16	3	8-32
	21	Knob	Antique English			7/8	1-1/4	5/16		8-32



Lexington



# Appalachia

	PART NO.	TYPE	FINISH	LENGTH	WIDTH	HEIGHT	DIAMETER	BASE	CC	TAP
	1	Knob	Lac Oak			1-1/8	1-3/8	9/16		8-32
	2	Knob	Unlac Oak			1-1/16	1	13/16		8-32
	3	Knob	Unlac Maple			1-1/16	1	13/16		8-32
	4	Knob	Unlac Pine			1	1-3/32	7/8		8-32
	5	Pull	Unlac Oak	4-13/16	2-1/8	13/16		2-1/8	96mm	8-32
	6	Pull	Unlac Oak	4-1/8	5/8	1-1/8		5/8	3-1/2	8-32
	7	Pull	Unlac Maple	4-1/8	5/8	1-1/8		5/8	3-1/2	8-32
	8	Pull	Unlac Oak	3-1/2	7/16	1-1/16		7/16	3	8-32
	9	Pull	Unlac Oak	4-1/2	1/2	1-1/16		1/2	4	8-32
	10	Pull	Unlac Oak	4	1/2	1-1/16		1/2	3-1/2	8-32
	11	Knob	Unlac Oak			1-1/16	1-5/16	1		8-32
	12	Knob	Unlac Maple			1-1/16	1-5/16	1		8-32
	13	Pull	Unlac Maple	3-1/2	1/2	1-1/16		1/2	3	8-32
	14	Pull	Unlac Maple	4-1/2	1/2	1-1/16		1/2	4	8-32
	15	Knob	Unlac Pine			1-1/16	1-5/16	1		8-32
	16	Knob	Unlac Cherry			1-1/16	1-5/16	1		8-32
	17	Knob	Unlac Maple			1-3/16	1-3/4	1-3/4		8-32
	18	Knob	Unlac Oak			1-3/16	1-3/4	1-3/4		8-32
	19	Pull	Antique English/Unlac Oak	5	3/4	1-1/4		3/4	3	8-32
	20	Pull	Polished Brass/Unlac Oak	5	3/4	1-1/4		3/4	3	8-32



Appalachia



# Bedford

PART NO.	TYPE	FINISH	LENGTH	WIDTH	HEIGHT	DIAMETER	BASE	CC	TAP
1	Bail Pull	Bedford Brass	4-1/4	2-9/16	7/8		2-9/16	2-1/2	8-32
2	Knob	Bedford Brass			13/16	1-1/8	5/16		8-32
3	Pull	Antique Brass	4-3/4	15/16	1		1	3	8-32
4	Knob	Oatmeal/Bright Brass			15/16	1-1/4	5/8		8-32
5	Knob	Lac Oak/Bright Brass			15/16	1-1/4	5/8		8-32
6	Knob	White/Bright Brass			15/16	1-1/4	5/8		8-32
7	Pull	Antique English/Lac Oak	5	3/4	1-1/4		3/4	3	8-32
8	Pull	Antique English/White	5	3/4	1-1/4		3/4	3	8-32
9	Pull	Antique English/Almond	5	3/4	1-1/4		3/4	3	8-32
10	Knob	Almond/Bright Brass			15/16	1-1/4	5/8		8-32
11	B/P	Bedford Brass	4-1/4	1-1/16	3/16		1-1/16		8-32
12	Pull	Antique English/Oatmeal	5	3/4	1-1/4		3/4	3	8-32



Bedford  
Berenson



## Zurich

	PART NO.	TYPE	FINISH	LENGTH	WIDTH	HEIGHT	DIAMETER	BASE	CC	TAP
1	6030-3SC-P	Pull	Brushed Chrome	4-5/16	5/16	1-1/4	5/16	4	8-32	
2	6031-3SC-P	Pull	Brushed Chrome	4-1/16	5/16	1-1/4	5/16	96mm	8-32	
3	6032-3SC-P	Pull	Brushed Chrome	3-13/16	5/16	1-1/4	5/16	3-1/2	8-32	
4	6033-3SC-P	Pull	Brushed Chrome	3-5/16	5/16	1-1/4	5/16	3	8-32	
5	6040-326-P	Pull	Polished Chrome	4-5/16	5/16	1-1/4	5/16	4	8-32	
6	6041-326-P	Pull	Polished Chrome	4-1/16	5/16	1-1/4	5/16	96mm	8-32	
7	6042-326-P	Pull	Polished Chrome	3-13/16	5/16	1-1/4	5/16	3-1/2	8-32	
8	6043-326-P	Pull	Polished Chrome	3-5/16	5/16	1-1/4	5/16	3	8-32	
9	6050-303-P	Pull	Polished Brass	4-5/16	5/16	1-1/4	5/16	4	8-32	
10	6051-303-P	Pull	Polished Brass	4-1/16	5/16	1-1/4	5/16	96mm	8-32	
11	6052-303-P	Pull	Polished Brass	3-13/16	5/16	1-1/4	5/16	3-1/2	8-32	
12	6053-303-P	Pull	Polished Brass	3-5/16	5/16	1-1/4	5/16	3	8-32	
13	6060-3SB-P	Pull	Satin Brass	4-5/16	5/16	1-1/4	5/16	4	8-32	
14	6061-3SB-P	Pull	Satin Brass	4-1/16	5/16	1-1/4	5/16	96mm	8-32	
15	6062-3SB-P	Pull	Satin Brass	3-13/16	5/16	1-1/4	5/16	3-1/2	8-32	
16	6063-3SB-P	Pull	Satin Brass	3-5/16	5/16	1-1/4	5/16	3	8-32	
17	6691-107-B	Recess Pull	Polished Gold	4-1/2	1-11/16	1/8				
18	6692-126-B	Recess Pull	Polished Chrome	4-1/2	1-11/16	1/8				
19	9855-303-P	Pull	Polished Brass	5-5/16	5/16	1-1/4	5/16	5	8-32	
20	9856-326-P	Pull	Polished Chrome	5-5/16	5/16	1-1/4	5/16	5	8-32	



# Rio

	PART NO.	TYPE	FINISH	LENGTH	WIDTH	HEIGHT	DIAMETER	BASE	CC	TAP
1	3900-748-B	Knob	White			1-1/8	1-1/2	5/8		#8
2	3901-754-B	Knob	Dark Gray			1-1/8	1-1/2	5/8		#8
3	3902-754-B	Knob	Light Gray			1-1/8	1-1/2	5/8		#8
4	3903-757-B	Knob	Red			1-1/8	1-1/2	5/8		#8
5	3904-752-B	Knob	Almond			1-1/8	1-1/2	5/8		#8
6	3905-755-B	Knob	Black			1-1/8	1-1/2	5/8		#8
7	3906-700-B	Knob	Peach			1-1/8	1-1/2	5/8		#8
8	3907-700-B	Knob	Seaspray			1-1/8	1-1/2	5/8		#8
9	3908-700-B	Knob	Hunter Green			1-1/8	1-1/2	5/8		#8
10	3909-756-B	Knob	Navy			1-1/8	1-1/2	5/8		#8
11	3910-700-B	Knob	Colonial Pink			1-1/8	1-1/2	5/8		#8
12	4708-754-B	Pull	Light Gray	3-3/8	3/8	1-3/8		3/8	3	#8
13	4709-754-B	Pull	Light Gray	4-1/8	3/8	1-3/16		3/8	96mm	#8
14	4710-748-B	Pull	White	4-1/8	3/8	1-3/16		3/8	96mm	#8
15	4713-754-B	Pull	Dark Gray	4-1/8	3/8	1-3/16		3/8	96mm	#8
16	4714-755-B	Pull	Black	4-1/8	3/8	1-3/16		3/8	96mm	#8
17	4715-756-B	Pull	Navy	4-1/8	3/8	1-3/16		3/8	96mm	#8
18	4716-757-B	Pull	Red	4-1/8	3/8	1-3/16		3/8	96mm	#8
19	4721-752-B	Pull	Almond	4-1/8	3/8	1-3/16		3/8	96mm	#8
20	4722-700-B	Pull	Colonial Pink	3-3/8	3/8	1-3/8		3/8	3	#8
21	4730-700-B	Pull	Hunter Green	3-3/8	3/8	1-3/8		3/8	3	#8
22	4731-700-B	Pull	Seaspray	3-3/8	3/8	1-3/8		3/8	3	#8
23	4732-700-B	Pull	Peach	3-3/8	3/8	1-3/8		3/8	3	#8
24	4735-754-B	Pull	Dark Gray	3-3/8	3/8	1-3/8		3/8	3	#8
25	4737-755-B	Pull	Black	3-3/8	3/8	1-3/8		3/8	3	#8
26	4738-748-B	Pull	White	3-3/8	3/8	1-3/8		3/8	3	#8
27	4740-752-B	Pull	Almond	3-3/8	3/8	1-3/8		3/8	3	#8
28	4741-757-B	Pull	Red	3-3/8	3/8	1-3/8		3/8	3	#8
29	4742-756-B	Pull	Navy	3-3/8	3/8	1-3/8		3/8	3	#8
30	4747-700-B	Pull	Peach	4-1/8	3/8	1-3/16		3/8	96mm	#8
31	4755-700-B	Pull	Seaspray	4-1/8	3/8	1-3/16		3/8	96mm	#8
32	4756-700-B	Pull	Hunter Green	4-1/8	3/8	1-3/16		3/8	96mm	#8
33	4757-700-B	Pull	Colonial Pink	4-1/8	3/8	1-3/16		3/8	96mm	#8



## Coverheads & Accessories

PART NO.	DESCRIPTION	FINISH	SIZE	DIAMETER	PROJECTION
1	4146-326	Solid Brass Coverhead	Polished Chrome	9/16	3/16
2	4149-303	Solid Brass Coverhead	Polished Brass	9/16	3/16
3	4150-326	Solid Brass Coverhead	Polished Chrome	1	1/8
4	4151-315	Solid Brass Coverhead	Brushed Chrome	1	1/8
5	4152-303	Solid Brass Coverhead	Polished Brass	1	1/8
6	4153-304	Solid Brass Coverhead	Brushed Brass	1	1/8
7	4155-326	Solid Brass Coverhead	Polished Chrome	9/16	3/32
8	4156-315	Solid Brass Coverhead	Brushed Chrome	9/16	3/32
9	4159-303	Solid Brass Coverhead	Polished Brass	9/16	3/32
10	4161-304	Solid Brass Coverhead	Brushed Brass	9/16	3/32
11	4170-222	Wood Screw for Coverhead	Plain	#8x5/8	
11	4171-222	Wood Screw for Coverhead	Plain	#8x3/4	
11	4173-222	Wood Screw for Coverhead	Plain	#8x1	
11	4174-222	Wood Screw for Coverhead	Plain	#8x1-1/4	
11	4175-222	Wood Screw for Coverhead	Plain	#8x1-1/2	
11	4176-222	Wood Screw for Coverhead	Plain	#8x1-3/4	
11	4177-222	Wood Screw for Coverhead	Plain	#8x2	
11	4179-222	Wood Screw for Coverhead	Plain	#8x2-1/2	
12	4197-222	Machine Screw for Coverheads	Plain	1/4-20x3/4	
12	4198-222	Machine Screw for Coverheads	Plain	1/4-20x1	
12	4199-222	Machine Screw for Coverheads	Plain	1/4-20x1-1/4	
12	4200-222	Machine Screw for Coverheads	Plain	1/4-20x1-1/2	
12	4201-222	Machine Screw for Coverheads	Plain	1/4-20x1-3/4	
12	4202-222	Machine Screw for Coverheads	Plain	1/4-20x2	
12	4204-222	Machine Screw for Coverheads	Plain	1/4-20x2-1/2	
12	4205-222	Machine Screw for Coverheads	Plain	1/4-20x3	
12	4206-222	Machine Screw for Coverheads	Plain	1/4-20x4	

# Part Number Index

Part No.	Type	Page No.	Position	Part No.	Type	Page No.	Position	Part No.	Type	Page No.	Position
0020-1SB-P	PULL	52	1	1639-1VB-P	PULL	9	14	2550-102-P	PULL	88	4
0021-1SB-P	KNOB	52	2	1640-1RBG-P	CUP PULL	9	15	2551-102-P	PULL	88	5
1010-9SS-C	PULL	34	1	1641-1AG-P	CUP PULL	8	16	2552-134-P	PULL	88	6
1011-9SS-C	PULL	34	2	1642-1AP-P	CUP PULL	8	17	2558-134-P	KNOB	92	5
1012-9SS-C	PULL	34	3	1643-1AP-P	KNOB	8	18	2560-103-P	KNOB	93	6
1014-9SS-C	PULL	34	4	1644-1VB-P	KNOB	9	19	2562-134-P	KNOB	88	7
1015-9SS-C	PULL	35	5	1725-539-P	KNOB	85	3	2563-102-P	KNOB	88	8
1016-9SS-C	PULL	36	6	1820-1BD-B	KNOB	92	2	2564-102-P	KNOB	89	9
1017-9SS-C	PULL	36	7	1913-1BPN-P	KNOB	81	2	2565-134-P	PULL	92	7
1018-9SS-C	PULL	36	8	1950-134-B	KNOB	90	1	2566-102-P	PULL	93	8
1019-9SS-C	PULL	36	9	1962-303-B	B/P	70	1	2567-102-P	PULL	92	9
1020-9SS-C	PULL	36	10	1963-303-B	B/P	74	3	2590-103-P	PULL	86	1
1021-9SS-C	PULL	36	11	1964-SRO-B	KNOB	90	2	2591-126-P	PULL	86	2
1025-303-C	KNOB	73	1	1964-SWM-B	KNOB	91	3	2614-102-P	KNOB	92	10
1030-303-P	KNOB	72	2	1965-303-B	B/P	74	4	2618-303-P	KNOB	42	2
1045-115-P	PULL	80	1	2000-1AI-P	PULL	57	1	2721-303-P	PULL	72	5
1074-198-P	PULL	84	1	2001-1AI-P	KNOB	57	2	2790-303-B	B/P	42	3
1082-198-P	KNOB	84	2	2002-1AI-P	KNOB	57	3	2791-326-B	B/P	41	4
1417-338-P	PULL	75	1	2003-1AI-P	PULL	57	4	2792-398-B	B/P	42	5
1418-338-P	KNOB	75	2	2004-1AI-P	PULL	57	5	2794-326-P	PULL	41	6
1604-1BD-B	PULL	93	1	2005-1MN-P	PULL	57	6	2795-3BPN-P	PULL	41	7
1610-1RBG-B	PULL	9	1	2006-1MN-P	KNOB	57	7	2796-398-P	PULL	41	8
1610-1RBG-B	PULL	26	1	2007-1MN-P	KNOB	57	8	2797-326-P	PULL	41	9
1611-1RBG-B	PULL	27	2	2050-155-P	KNOB	56	9	2797-398-P	PULL	41	10
1612-1RBG-B	PULL	27	3	2051-1FE-P	KNOB	56	10	2797-3BPN-P	PULL	41	11
1613-1RBG-B	PULL	26	4	2052-155-P	PULL	56	11	2802-303-B	PULL	72	6
1614-1RBG-B	KNOB	8	2	2053-1FE-P	PULL	56	12	2880-539-P	KNOB	85	6
1614-1RBG-B	KNOB	26	5	2054-155-P	KNOB	58	1	2881-538-P	KNOB	85	7
1615-1RBG-B	KNOB	27	6	2055-1FE-P	KNOB	28	1	2903-1BPN-P	KNOB	53	3
1616-1RBG-B	KNOB	26	7	2055-1FE-P	KNOB	58	2	2904-1BBN-P	KNOB	53	4
1617-1RBG-B	KNOB	26	8	2056-155-P	PULL	58	3	2905-1BAC-P	KNOB	52	5
1618-1RBG-B	KNOB	27	9	2057-1FE-P	PULL	58	4	2906-102-P	KNOB	52	6
1619-1RBG-B	PULL	26	10	2058-1FB-P	KNOB	58	5	2907-1FE-P	KNOB	52	7
1620-1RBG-B	KNOB	26	11	2059-1AP-P	KNOB	58	6	2908-1BAP-P	KNOB	53	8
1621-1AG-B	PULL	8	3	2060-1FB-P	PULL	58	7	2910-1BPN-P	PULL	53	9
1621-1AG-B	PULL	26	12	2061-1AP-P	PULL	58	8	2911-1BBN-P	PULL	53	10
1622-1AG-B	PULL	27	13	2062-1AB-P	KNOB	56	13	2913-1BAC-P	PULL	52	11
1623-1AG-B	PULL	27	14	2063-1AP-P	KNOB	56	14	2915-102-P	PULL	52	12
1624-1AG-B	PULL	26	15	2064-1AB-P	PULL	56	15	2918-1FE-P	PULL	52	13
1625-1AG-B	KNOB	8	4	2065-1AP-P	PULL	56	16	2919-1BAP-P	PULL	53	14
1625-1AG-B	KNOB	26	16	2133-102-B	PULL	93	3	2920-1BPN-P	KNOB	46	1
1626-1AG-B	KNOB	26	17	2204-103-P	PULL	84	4	2921-1BBN-P	KNOB	47	2
1627-1AG-B	KNOB	27	18	2236-1DC-P	PULL	56	17	2923-1BAC-P	KNOB	46	3
1628-1AG-B	KNOB	26	19	2237-1DC-P	KNOB	56	18	2924-1BAP-P	KNOB	46	4
1629-1AG-B	KNOB	27	20	2301-303-P	B/P	42	1	2927-155-P	KNOB	46	5
1630-1AP-P	PULL	8	5	2301-303-P	B/P	73	3	2928-1FE-P	KNOB	47	6
1631-1VB-P	PULL	9	6	2302-303-B	B/P	72	4	2930-1BPN-P	PULL	46	7
1632-1RBG-P	KNOB	9	7	2434-539-P	KNOB	88	1	2931-1BBN-P	PULL	47	8
1633-1AG-P	KNOB	8	8	2435-537-P	KNOB	88	2	2933-1BAC-P	PULL	46	9
1634-1AP-P	KNOB	8	9	2437-537-P	KNOB	92	4	2934-1BAP-P	PULL	46	10
1635-1VB-P	KNOB	9	10	2445-539-P	KNOB	89	3	2937-155-P	PULL	46	11
1636-1RBG-P	PULL	9	11	2469-303-C	KNOB	71	2	2938-1FE-P	PULL	47	12
1637-1AG-P	PULL	8	12	2500-5CR-B	KNOB	60	1	2940-1TN-C	PULL	50	1
1638-1AP-P	PULL	8	13	2536-539-P	KNOB	85	5	2941-1ALU-C	PULL	50	2

Part No.	Type	Page No.	Position	Part No.	Type	Page No.	Position	Part No.	Type	Page No.	Position	Part No.	Type	Page No.	Position	Part No.	Type	Page No.	Position	Part No.	Type	Page No.	Position	Part No.	Type	Page No.	Position
2942-1DAB-C	PULL	50	3	3043-155-P	PULL	19	4	4732-700-B	PULL	96	23	6062-3SP-P	PULL	94	15	7011-1BPN-C	KNOB	50	17	7077-9SS-C	PULL	39	11				
2943-1BPN-C	PULL	50	4	3044-1LWI-P	PULL	18	5	4735-754-B	PULL	96	24	6063-3SP-P	PULL	94	16	7011-1BPN-C	KNOB	64	10	7078-9SS-C	KNOB	40	12				
2944-1TN-C	KNOB	50	5	3045-1WN-P	PULL	18	6	4737-755-B	PULL	96	25	6188-103-P	PULL	80	3	7012-126-C	KNOB	51	18	7079-9SS-C	KNOB	39	13				
2945-1ALU-C	KNOB	50	6	3046-155-P	KNOB	19	7	4738-748-B	PULL	96	26	6189-126-P	PULL	80	4	7012-126-C	KNOB	64	11	7081-1BPN-C	PULL	49	1				
2946-126-C	KNOB	51	7	3047-1LWI-P	KNOB	18	8	4740-752-B	PULL	96	27	6190-148-P	PULL	80	5	7014-1BBZ-C	KNOB	65	12	7082-1BT-C	PULL	49	2				
2947-1DAB-C	KNOB	51	8	3048-1WN-P	KNOB	18	9	4741-757-B	PULL	96	28	6191-1BPN-P	PULL	80	6	7015-107-C	PULL	64	13	7083-1DAB-C	PULL	49	3				
2948-1BPN-C	KNOB	50	9	3049-155-P	KNOB	19	10	4742-756-B	PULL	96	29	6270-103-P	KNOB	77	1	7016-1BPN-C	PULL	64	14	7084-1BPN-C	PULL	48	4				
2949-1TN-C	PULL	51	10	3050-1LWI-P	KNOB	18	11	4747-700-B	PULL	97	30	6271-126-P	KNOB	77	2	7017-126-C	PULL	64	15	7085-1BT-C	PULL	48	5				
2950-1ALU-C	PULL	50	11	3051-1WN-P	KNOB	19	12	4755-700-B	PULL	96	31	6275-303-B	KNOB	73	11	7018-155-C	PULL	64	16	7086-1DAB-C	PULL	48	6				
2951-126-C	PULL	51	12	3052-155-P	KNOB	19	13	4756-700-B	PULL	97	32	6691-107-B	PULL	95	17	7019-198-C	PULL	64	17	7087-1BPN-C	KNOB	49	7				
2952-1DAB-C	PULL	51	13	3053-1LWI-P	KNOB	18	14	4757-700-B	PULL	97	33	6692-126-B	PULL	95	18	7020-107-C	KNOB	64	18	7088-1BT-C	KNOB	48	8				
2953-1BPN-C	PULL	50	14	3054-1WN-P	KNOB	18	15	4970-539-P	KNOB	89	10	6850-326-C	PULL	78	1	7021-1BPN-C	KNOB	65	19	7089-1DAB-C	KNOB	49	9				
2954-1TN-C	KNOB	51	15	3055-155-P	KNOB	19	16	4972-539-P	KNOB	89	11	6851-398-C	PULL	78	2	7022-126-C	KNOB	65	20	7090-1BPN-C	KNOB	49	10				
2957-1DAB-C	KNOB	50	16	3056-1LWI-P	KNOB	18	17	4975-538-P	KNOB	89	12	6900-755-C	KNOB	77	3	7023-155-C	KNOB	64	21	7091-1BT-C	KNOB	49	11				
2959-1ALU-C	PULL	33	1	3057-1WN-P	KNOB	18	18	4980-303-P	PULL	54	1	6907-316-P	PULL	79	3	7024-198-C	KNOB	64	22	7092-1DAB-C	KNOB	48	12				
2960-1BPN-C	PULL	33	2	3203-203-B	B/P	84	8	4981-302-P	PULL	55	2	6909-398-P	PULL	79	4	7031-907-C	KNOB	66	1	7093-1BPN-C	KNOB	48	13				
2961-126-C	PULL	33	3	3225-SWP-B	KNOB	91	4	4982-302-P	KNOB	55	3	6911-148-C	PULL	76	4	7032-926-C	KNOB	67	2	7094-1BT-C	KNOB	48	14				
2962-1BPN-C	PULL	33	4	3320-1BD-B	B/P	92	11	4983-5CR-B	KNOB	60	2	6912-155-C	PULL	76	5	7033-907-C	KNOB	66	3	7095-1DAB-C	KNOB	49	15				
2963-1ALU-C	PULL	32	5	3329-3BPN-P	KNOB	71	3	4984-SWM-B	KNOB	91	17	6913-126-C	PULL	76	6	7034-926-C	KNOB	67	4	7096-1BPN-C	KNOB	48	16				
2964-1BPN-C	PULL	32	6	3330-303-P	KNOB	72	7	4985-SRO-B	KNOB	90	18	6916-107-C	PULL	76	7	7035-907-C	KNOB	67	5	7097-1BT-C	KNOB	49	17				
2965-126-C	PULL	32	7	3340-103-C	PULL	87	3	4990-303-P	PULL	55	4	6920-106-C	PENDANT	68	1	7036-926-C	KNOB	67	6	7099-1DAB-C	KNOB	48	18				
2966-1ALU-C	PULL	32	8	3399-630-B	PULL	90	5	4991-3BPN-P	PULL	55	5	6921-748-C	KNOB	76	8	7037-907-C	KNOB	66	7	7100-115-C	PULL	78	9				
2967-1BPN-C	PULL	32	9	3454-630-B	PULL	90	6	4992-3BAC-P	PULL	54	6	6926-107-C	PULL	68	2	7038-926-C	KNOB	67	8	7104-1BPN-C	PULL	14	1				
2968-1ALU-C	PULL	32	10	3454-SWM-B	PULL	91	7	4993-3BBN-P	PULL	55	7	6927-188-C	PULL	68	3	7039-907-C	KNOB	67	9	7105-1RN-C	PULL	14	2				
2969-1ALU-C	PULL	32	11	3457-630-B	PULL	90	8	4994-303-P	KNOB	55	8	6928-190-C	PULL	68	4	7040-926-C	KNOB	67	10	7106-1RI-C	PULL	14	3				
2970-126-C	PULL	33	12	3458-630-B	PULL	90	9	4995-3BPN-P	KNOB	55	9	6929-106-C	PULL	68	5	7041-907-C	KNOB	67	11	7107-1RC-C	PULL	14	4				
2971-1ALU-C	PULL	33	13	3459-630-B	PULL	90	10	4996-3BAC-P	KNOB	54	10	6930-115-C	PULL	76	9	7042-926-C	KNOB	66	12	7108-1RBN-C	PULL	14	5				
2972-126-C	PULL	32	14	3460-630-B	KNOB	90	11	4997-3BBN-P	KNOB	55	11	6931-155-C	PULL	78	5	7043-587-C	PULL	66	13	7109-1BPN-C	PULL	15	6				
2973-1RN-C	PULL	22	1	3462-SWM-B	KNOB	91	12	4998-302-P	PULL	54	12	6932-115-C	PULL	78	6	7044-588-C	PULL	66	14	7110-1RN-C	PULL	15	7				
2974-1RC-C	PULL	23	2	3463-SWM-B	PULL	91	13	4999-3BPN-P	PULL	54	13	6935-189-C	PULL	81	7	7045-586-C	PULL	66	15	7111-1RI-C	PULL	15	8				
2975-1RI-C	PULL	22	3	3464-SWM-B	PULL	91	14	5000-3BAC-P	PULL	54	14	6936-188-C	PULL	81	8	7046-587-C	KNOB	66	16	7112-1RC-C	PULL	15	9				
2976-1RN-C	KNOB	22	4	3465-SWP-B	KNOB	91	15	5001-3BBN-P	PULL	54	15	6937-127-C	PULL	81	9	7047-588-C	KNOB	66	17	7113-1RBN-C	PULL	15	10				
2977-1RC-C	KNOB	23	5	3468-SCH-B	KNOB	91	16	5002-302-P	KNOB	54	16	6938-167-C	PULL	81	10	7048-586-C	KNOB	66	18	7114-1BPN-C	KNOB	15	11				
2978-1RI-C	KNOB	22	6	3900-748-B	KNOB	96	1	5003-303-P	KNOB	54	17	6939-195-C	PULL	81	11	7049-587-C	KNOB	66	19	7115-1RN-C	KNOB	14	12				
2979-1RN-C	PULL	22	7	3901-754-B	KNOB	96	2	5004-3BPN-P	KNOB	54	18	6980-107-C	B/P	69	6	7050-588-C	KNOB	66	20	7116-1RI-C	KNOB	15	13				
2980-1RC-C	PULL	23	8	3902-754-B	KNOB	96	3	5005-3BAC-P	KNOB	54	19	6981-106-C	B/P	68	7	7051-586-C	KNOB	66	21	7117-1RC-C	KNOB	14	14				
2981-1RI-C	PULL	22	9	3903-757-B	KNOB	96	4	5006-3BBN-P	KNOB	54	20	6982-107-C	B/P	69	8	7053-155-C	PULL	62	5	7118-1RBN-C	KNOB	15	15				
2982-1RN-C	KNOB	22	10	3904-752-B	KNOB	96	5	5022-103-B	B/P	84	9	6983-106-C	B/P	68	9	7054-1BPN-C	PULL	62	6	7119-1BPN-C	PULL	17	1				
2983-1RC-C	KNOB	23	11	3905-755-B	KNOB	97	6	5023-103-B	B/P	84	10	6984-107-C	B/P	69	10	7055-107-C	PULL	62	7	7120-1RAB-C	PULL	16	2				
2984-1RI-C	KNOB	22	12	3906-700-B	KNOB	96	7	5231-303-C	KNOB	70	4	6986-106-C	B/P	68	11	7056-126-C	PULL	62	8	7121-1RN-C	PULL	17	3				
2985-1RN-C	PULL	22	13	3907-700-B	KNOB	96	8	5238-303-P	KNOB	70	5	6987-188-C	PENDANT	69	12	7058-155-C	KNOB	62	9	7122-1RI-C	PULL	17	4				
2986-1RC-C	PULL	23	14	3908-700-B	KNOB	96	9	5275-303-P	KNOB	74	5	6988-190-C	PENDANT	69	13	7059-1BPN-C	KNOB	62	10	7123-1RC-C	PULL	16	5				
2987-1RI-C	PULL	22	15	3909-756-B	KNOB	97	10	5276-303-P	KNOB	75	6	6990-107-C	PENDANT	69	14	7060-107-C	KNOB	63	11	7124-1RBN-C	PULL	16	6				
2988-1RN-C	KNOB	22	16	3910-700-B	KNOB	97	11	5284-303-P	KNOB	42	12	6991-107-C	B/P	69	15	7062-126-C	KNOB	63	12	7125-1BPN-C	KNOB	16	7				
2989-1RC-C	KNOB	23	17	4329-303-B	KNOB	73	8	6030-3SC-P	PULL	94	1	6995-107-C	KNOB	69	16	7063-148-C	PULL	63	13	7126-1RAB-C	KNOB	16	8				
2990-1RI-C	KNOB	22	18	4330-303-P	KNOB	72	9	6031-3SC-P	PULL	94	2	6996-106-C	KNOB	68	17	7064-107-C	PULL	63	14	7127-1RN-C	KNOB	17	9				
3008-1DBZ-P	PULL	20	1	4331-303-C	KNOB	73	10	6032-3SC-P	PULL	94	3	6997-190-C	KNOB	68	18	7065-126-C	PULL	63	15	7128-1RI-C	KNOB	17	10				
3009-1DBZ-P	PULL	20	2	4708-754-B	PULL	96	12	6033-3SC-P	PULL	94	4	6998-167-C	KNOB	78	7	7066-1BPN-C	PULL	63	16	7129-1RC-C	KNOB	16	11				
3011-1AP-P	PULL	20	3	4709-754-B	PULL	96	13	6040-326-P	PULL	94	5	6999-188-C	KNOB	78	8	7067-9SS-C	PULL	38	1	7130-1RBN-C	KNOB	16	12				
3012-1AP-P	PULL	20	4	4710-748-B	PULL	96	14	6041-326-P	PULL	94	6	7000-107-C	PULL	65	1	7068-9SS-C	PULL	37	2	7160-103-P	PULL	84	11				
3014-1BPN-P	PULL	21	5	4713-754-B	PULL	96	15	6042-326-P	PULL	94	7	7001-1BPN-C	PULL	65	2	7069-9SS-C	PULL	37	3	7161-102-P	PULL	89	13				
3017-155-P	PULL	62	1	4714-755-B	PULL	96	16	6043-326-P	PULL	94	8	7002-126-C	PULL	65	3	7070-9SS-C	PULL	37	4	7293-537-P	PULL	92	12				
3030-1BPN-P	PULL	62	2	4715-756-B	PULL	97	17	6050-303-P	PULL	94	9	7004-1BBZ-C	PULL	65	4	7071-9SS-C	PULL	38	5	7300-303-P	KNOB	42	13				
3031-1BPN-P	PULL	62	3	4716-757-B	PULL	97	18	6051-303-P	PULL	94	10	7005-107-C	KNOB	64	5	7072-9SS-C	PULL	38	6	7308-102-P	PULL	88	14				
3032-1BPN-P	KNOB	62	4	4721-752-B	PULL	96	19	6052-303-P	PULL	94	11	7006-1BPN-C															

Part No.	Type	Page No.	Position	Part No.	Type	Page No.	Position	Part No.	Type	Page No.	Position	Part No.	Type	Page No.	Position	Part No.	Type	Page No.	Position	<b>Accessories</b>					
																				Part No.	Type	Page No.	Position		
7332-326-P	KNOB	75	7	8010-03-P	HOOK	25	1	9511-398-P	PULL	74	14	9846-126-B	B/P	79	23	9930-303-B	KNOB	71	16	4146-326	COVERHEAD	98	1		
7333-303-P	KNOB	75	8	8011-26-P	HOOK	24	2	9512-303-P	KNOB	82	5	9847-148-B	B/P	79	24	9932-303-P	KNOB	42	23	4149-303	COVERHEAD	98	2		
7341-102-B	B/P	88	16	8012-BPN-P	HOOK	25	3	9513-326-P	KNOB	82	6	9848-102-B	B/P	89	19	9933-110-P	KNOB	29	17	4150-326	COVERHEAD	98	3		
7342-102-P	PULL	89	17	8013-WN-P	HOOK	24	4	9514-398-C	KNOB	82	7	9849-1CU-P	KNOB	86	23	9934-1FE-P	KNOB	29	18	4151-315	COVERHEAD	98	4		
7344-102-P	PULL	89	18	8014-55-P	HOOK	25	5	9525-317-P	PULL	82	8	9850-303-C	PULL	71	15	9935-1WC-P	KNOB	29	19	4152-303	COVERHEAD	98	5		
7347-103-P	KNOB	87	4	8015-ORB-P	HOOK	13	15	9527-317-P	KNOB	83	9	9851-367-C	KNOB	74	17	9937-1BPN-P	KNOB	28	21	4153-304	COVERHEAD	98	6		
7348-103-P	PULL	86	5	8015-ORB-P	HOOK	24	6	9528-399-P	KNOB	41	18	9855-303-B	PULL	95	19	9938-110-P	KNOB	29	22	4155-326	COVERHEAD	98	7		
7401-130-P	PULL	90	19	8016-VB-P	HOOK	10	15	9529-398-P	PULL	82	10	9856-326-B	PULL	95	20	9939-199-P	KNOB	80	19	4156-315	COVERHEAD	98	8		
7410-130-B	PULL	90	20	8016-VB-P	HOOK	25	7	9530-398-P	KNOB	41	19	9860-1AP-B	PULL	60	3	9940-3BPN-P	PULL	70	17	4159-303	COVERHEAD	98	9		
7411-103-P	PULL	84	12	8017-LWI-P	HOOK	24	8	9531-303-P	PULL	72	20	9861-1AP-B	PULL	61	4	9941-1WC-P	KNOB	28	23	4161-304	COVERHEAD	98	10		
7412-103-P	PULL	84	13	8071-103-P	PULL	87	8	9532-326-P	KNOB	42	20	9862-1AP-B	B/P	61	5	9942-1WN-P	KNOB	28	24	4170-222	ITWS	98	11		
7627-103-P	PULL	86	6	8072-134-P	PULL	87	9	9532-398-P	KNOB	42	21	9863-1AP-B	KNOB	61	6	9943-3BPN-P	KNOB	70	18	4171-222	ITWS	98	11		
7628-103-P	PULL	86	7	8073-103-P	PULL	87	10	9533-303-P	PULL	73	21	9864-1AP-B	PULL	61	7	9950-303-P	KNOB	43	24	4173-222	ITWS	98	11		
7862-107-C	PULL	78	10	8074-103-P	PULL	87	11	9535-747-P	PULL	82	11	9865-1AP-B	PULL	61	8	9950-303-P	KNOB	74	22	4174-222	ITWS	98	11		
7863-126-C	PULL	78	11	8075-103-P	PULL	86	12	9537-317-P	KNOB	83	12	9866-1AP-B	B/P	61	9	9951-326-P	KNOB	43	25	4175-222	ITWS	98	11		
7864-148-C	PULL	78	12	8076-1BPN-P	PULL	86	13	9538-317-P	PULL	83	13	9867-1AP-B	KNOB	60	10	9952-398-P	KNOB	43	26	4176-222	ITWS	98	11		
7870-2ORB-P	PULL	12	1	8078-126-P	KNOB	86	14	9539-303-P	PULL	83	14	9868-1AP-B	KNOB	60	11	9953-303-P	PULL	72	22	4177-222	ITWS	98	11		
7871-2ORB-P	KNOB	12	2	8079-103-P	KNOB	87	15	9540-326-P	PULL	83	15	9869-1AP-B	PULL	60	12	9955-35B-P	KNOB	43	27	4179-222	ITWS	98	11		
7872-2ORB-P	PULL	12	3	8080-134-P	KNOB	87	16	9542-326-P	KNOB	41	22	9870-1AP-B	PULL	61	13	9956-3BPN-P	KNOB	43	28	4197-222	ITMS	98	12		
7873-2ORB-P	KNOB	12	4	8081-103-P	KNOB	87	17	9563-126-P	KNOB	85	20	9871-1FB-B	KNOB	61	14	9956-302-P	KNOB	43	29	4198-222	ITMS	98	12		
7874-1ORB-P	PULL	13	5	8082-103-P	KNOB	87	18	9601-155-C	KNOB	76	14	9872-1CT-B	KNOB	60	15	9958-3SC-P	KNOB	43	30	4199-222	ITMS	98	12		
7875-1ORB-P	PULL	13	6	8085-126-P	PULL	86	19	9701-107-C	KNOB	77	15	9873-1CT-B	PULL	60	16	9960-2AP-P	PULL	30	1	4200-222	ITMS	98	12		
7876-1VB-P	PULL	11	1	8086-198-P	PULL	86	20	9701-126-P	KNOB	77	16	9874-1CT-B	KNOB	60	17	9961-2AP-P	PULL	31	2	4201-222	ITMS	98	12		
7877-1ORB-P	KNOB	13	7	8087-198-P	KNOB	86	21	9701-198-P	KNOB	77	17	9875-1AP-B	PULL	60	18	9962-2AP-P	PULL	30	3	4202-222	ITMS	98	12		
7878-1VB-P	KNOB	11	2	8089-155-P	KNOB	64	23	9701-199-P	KNOB	77	18	9876-1AP-B	KNOB	61	19	9964-2AP-P	KNOB	30	4	4204-222	ITMS	98	12		
7879-1ORB-P	KNOB	13	8	8563-103-C	KNOB	84	14	9704-107-P	PULL	77	19	9877-1RB-B	PULL	59	9	9966-2AP-P	KNOB	30	5	4205-222	ITMS	98	12		
7880-1ORB-P	PULL	12	9	8850-303-P	KNOB	72	12	9704-126-P	PULL	77	20	9878-1RB-B	KNOB	59	10	9967-2AP-P	KNOB	30	6	4206-222	ITMS	98	12		
7881-1BPN-P	PULL	21	6	8851-326-P	KNOB	73	13	9704-198-P	PULL	77	21	9879-1RB-B	PULL	59	11	9968-2BPN-P	PULL	76	23						
7882-1AEP-P	PULL	21	7	8852-398-P	KNOB	72	14	9704-199-P	PULL	77	22	9880-1RB-B	KNOB	59	12	9979-103-P	KNOB	84	21						
7883-1VB-P	PULL	11	3	8854-3BPN-P	KNOB	72	15	9710-1BPN-P	PULL	45	1	9881-1RB-B	KNOB	58	13	9980-255-P	PULL	30	7						
7884-1BPN-P	PULL	21	8	8932-126-C	KNOB	76	10	9711-1BAC-P	PULL	44	2	9882-1RP-B	PULL	59	14	9981-2RU-P	PULL	30	8						
7885-1AEP-P	PULL	20	9	8933-107-C	KNOB	76	11	9712-1BBN-P	PULL	45	3	9883-1RP-B	KNOB	59	15	9982-255-P	PULL	31	9						
7886-1VB-P	PULL	10	4	8934-198-C	KNOB	78	13	9713-1BAB-P	PULL	44	4	9884-1RP-B	KNOB	59	16	9983-2RU-P	PULL	31	10						
7887-1AEP-P	PULL	21	10	8935-116-C	KNOB	78	14	9718-1BPN-P	PULL	45	5	9885-110-P	PULL	29	3	9984-255-P	KNOB	31	11						
7888-1AP-P	PULL	20	11	8953-148-C	KNOB	76	12	9719-1BAC-P	PULL	44	6	9886-1BPN-P	PULL	29	4	9985-2RU-P	KNOB	31	12						
7889-1DBZ-P	PULL	20	12	8954-155-C	KNOB	76	13	9720-1BBN-P	PULL	45	7	9887-1FE-P	PULL	29	5	9986-255-P	KNOB	30	13						
7890-1VB-P	PULL	11	5	8962-155-C	KNOB	78	15	9721-1BAB-P	PULL	44	8	9888-1WN-P	PULL	29	6	9987-2RU-P	KNOB	30	14						
7891-1BPN-P	KNOB	21	13	9020-103-P	KNOB	84	15	9722-1BAC-P	KNOB	44	9	9889-1WC-P	PULL	29	7	9988-2AP-P	PULL	30	15						
7892-1AEP-P	KNOB	21	14	9022-126-B	B/P	85	16	9723-1BBN-P	KNOB	45	10	9890-110-P	PULL	28	8	9989-255-P	PULL	30	16						
7893-1AP-P	KNOB	20	15	9074-126-P	PULL	85	17	9724-1BAB-P	KNOB	44	11	9891-102-P	PULL	88	20	9990-2RU-P	PULL	30	17						
7894-1DBZ-P	KNOB	20	16	9079-1BPN-P	KNOB	28	2	9825-303-P	PULL	71	6	9892-1FE-P	PULL	28	9	9991-255-P	PULL	31	18						
7895-1VB-P	KNOB	10	6	9079-1BPN-P	KNOB	86	22	9826-303-P	B/P	71	7	9893-1WC-P	PULL	28	10	9992-2RU-P	PULL	30	19						
7896-1ORB-P	KNOB	12	10	9082-126-P	KNOB	85	18	9829-3BPN-B	PULL	70	8	9895-1WN-P	PULL	28	11	9994-303-P	PULL	42	31						
7897-1VB-P	KNOB	11	7	9105-303-P	KNOB	73	16	9830-303-P	PULL	71	9	9896-1BPN-P	PULL	28	12	9996-303-P	PULL	41	32						
7898-1VB-P	PULL	11	8	9106-303-C	KNOB	73	17	9831-303-P	PULL	70	10	9910-103-P	KNOB	80	15	9997-303-P	PULL	41	33						
7899-1VB-P	KNOB	11	9	9110-303-C	KNOB	72	18	9832-303-P	PULL	70	11	9911-126-P	KNOB	81	16	9998-303-P	PULL	42	34						
7900-1VB-P	PULL	10	10	9111-303-C	KNOB	72	19	9833-303-B	PULL	70	12	9913-1BPN-P	KNOB	45	12										
7901-1VB-P	PULL	10	11	9160-126-B	PULL	85	19	9834-303-B	PULL	70	13	9913-1BPN-P	KNOB	80	17										
7902-1VB-P	PULL	80	12	9312-303-P	KNOB	42	17	9836-947-C	KNOB	71	14	9914-198-P	KNOB	81	18										
7903-1VB-P	PULL	80	13	9421-339-P	PULL	74	9	9837-107-C	PULL	79	16	9917-338-P	PULL	75	18										
7904-1VB-P	PULL	10	12	9422-339-P	KNOB	74	10	9838-126-P	PULL	79	17	9918-338-P	KNOB	75	19										
7905-1VB-P	PULL	10	13	9500-326-P	PULL	82	1	9839-148-C	PULL	79	18	9921-339-P	PULL	75	20										
7906-1VB-P	KNOB	10	14	9501-303-P	PULL	82	2	9840-107-B	B/P	79	19	9922-339-P	KNOB	74	21										
7907-1ORB-P	PULL	12	11	9502-747-C	PULL	82	3	9841-126-B	B/P	79	20	9923-110-P	KNOB	28	13										
7908-1ORB-P	KNOB	12	12	9506-326-P	KNOB	82	4	9842-148-B	B/P	79	21	9924-1BPN-P	KNOB	29	14										
7909-1ORB-P	KNOB	13	13	9508-303-P	PULL	74	11	9843-339-C	PULL	74	15	9925-1WC-P	KNOB	28	15										
7910-1ORB-P	PULL	12	14	9509-303-P	PULL	74	12	9844-339-C	KNOB	74	16	9926-102-P	KNOB	89	21										
7911-1BPN-P	PULL	80	14	9510-398-P	PULL	74	13	9845-107-B	B/P	79	22	9927-1WN-P	KNOB	28	16										

# Choral for Customer Support

## Selection and Service

Berenson offers a huge selection of parts in materials, finishes, sizes and styles to enhance the appearance of cabinets and furniture. To support our distributors, we ship within 24 hours regardless of the size of the order. There are no minimum quantities or "broken box" penalties.

Enthusiasm for helping you sets Berenson apart. We take the time to listen to your concerns. Our keen awareness of your practical, everyday requirements enables us to address your needs with smart solutions that can save you time and money.

## Nationwide Distribution

Our products are stocked throughout the USA by qualified distributors dedicated to customer service.

## Quality and Value

Sophisticated control systems monitor all quality-related activities. Combined with our selection, service and competitive prices, it all adds up to customer satisfaction and value unmatched in the industry. If you cannot find what you are looking for, then call us. We can find the right product at the right price to meet your specifications.

## Dealer Support

Berenson provides attractive sample boards, display towers and other merchandising support to help you move product and increase profitability. Our library of parts and collections photography is available for use. We have developed many custom flyers, inserts and other materials to assist dealers selling the Berenson product line.



# Repertoire of Website Search

**Search  
No  
More!**

Visit [www.BerensonHardware.com](http://www.BerensonHardware.com)

For the most up-to-date listings of all Berenson parts, new products and other news, visit our website. It features three easy ways that you can find exactly what you are looking for:

1. Search by Collection  
View your favorite collections and click on individual parts for a photo and complete specifications.

2. Search by Part Number

Enter Part Number  -

Enter a full or partial Berenson part number, and our powerful search function will find the exact match or all possible matches.

3. Search by Your Criteria  
As shown below, our sophisticated and powerful "Search Database" feature lets you choose the selection criteria. The results will return a list of matching part numbers and photos. Click on individual parts for a larger photo and complete specifications.



TYPE OF PART	FINISH	MATERIAL
<input type="text" value="Cup Pull"/>	<input type="text" value="Aluminum"/> <input type="text" value="Antique Brass"/> <input type="text" value="Antique Pewter"/> <input type="text" value="Brushed Antique Copper"/> <input type="text" value="Brushed Nickel"/> <input type="text" value="Brushed Black Nickel"/> <input type="text" value="Chrome"/> <input type="text" value="Dull Bronze"/> <input type="text" value="Polished Antique Brass"/> <input type="text" value="Rustic Copper"/> <input type="text" value="Rustic Iron"/> <input type="text" value="Rustic Nickel"/> <input type="text" value="Venetian Bronze"/>	<input type="text" value="Zinc"/>
HOLE SPACING		COLLECTION
<input type="text" value="64mm"/>		<input type="text" value="Andante"/> <input type="text" value="Euro Moderno"/> <input type="text" value="Euro Retro"/> <input type="text" value="Euro Rustica"/> <input type="text" value="Vibrato"/>
	<input type="button" value="Find"/> <input type="button" value="Reload"/>	

Here is one example of how fast and easy it is to find exactly what you want on our website. If you need a cup pull with hole spacing of 64mm, our search feature automatically shows you the 14 finishes and four collections in which these specific parts are available. Clicking on "Find" brings you 17 items to choose from. You can make your searches as narrow or broad-based as you like. For example, you can narrow the above search by a single finish or collection, or expand it by other hole spacing sizes. This special feature selects from more than 13 million permutations and presents your results in seconds!

# Medley of Advantages

Only Berenson makes your selection of cabinet hardware this easy.

Whether you use the phone, the Internet, or our catalog, Berenson makes it easier than ever for you to select decorative cabinet hardware. This catalog is prepared specifically to be more helpful in several ways:

- Parts are shown at actual size, or close to actual size, including the extra-long pulls in the center spreads.
- Complete specifications for all parts are provided in easy-to-follow charts.
- Available sample boards for merchandising are shown with appropriate collections.
- A comprehensive cross-reference index makes it easy to look up items by part number.



## The Berenson Advantage

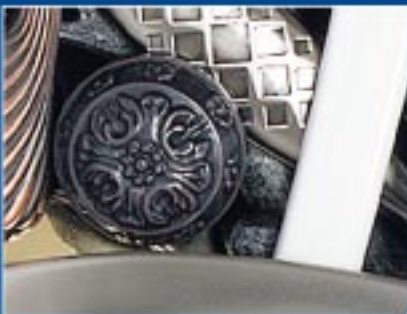
- No minimum quantity we will ship any number of parts within 24 hours to support our distributors.
- Huge selection of decorative hardware unsurpassed for quality, style and value.
- Attractive, flexible merchandising and display options including sample boards, towers and more.
- A dedicated customer service team and representatives nationwide to help provide smart solutions to your daily challenges.
- Our high-powered website makes it simple and quick to select the best parts to meet your needs. You can find what you want by collection, by part number, or by your criteria. Search No More!  
Visit [www.BerensonHardware.com](http://www.BerensonHardware.com).

# Industry Suite

Berenson supports the industry with membership in the leading trade associations and participation at major trade shows including K/BIS and AWFS. Management personnel serve on advisory committees and boards to help advance the needs, education and causes of members in a global market.

## Affiliations





# Berenson

Berenson Corp  
2495 Main Street, Suite 111  
Buffalo, NY 14214-2152  
Phone: 716-833-3100  
Fax: 716-833-2402  
E-mail: [info@berensonhardware.com](mailto:info@berensonhardware.com)  
[www.BerensonHardware.com](http://www.BerensonHardware.com)